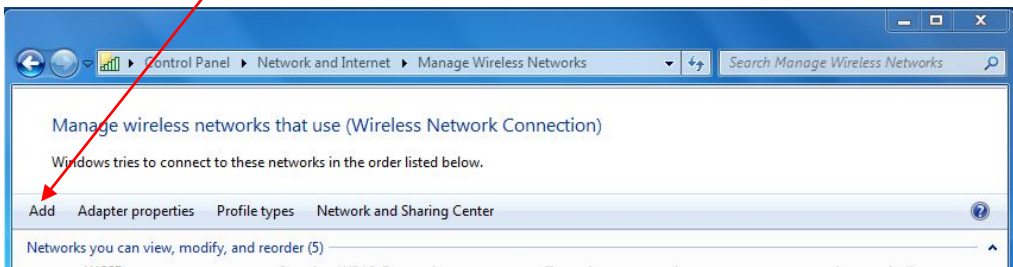


# WINDOWS 7 WIRELESS NETWORK SETTINGS

1. Go to **'Start'**,
2. Select **'Control Panel'**.
3. If you have not already done so, set "View by:" to **"Small Icons"**.
4. Select **'Network and Sharing Center'**. (*Note: You will only see this when the view is set to Small or Large Icons; if the view is set to "Category" you will not see Network and Sharing Center*)
5. Click **'Manage Wireless Networks'** in the upper left hand corner of that window.
6. Click the **'Add'** button.



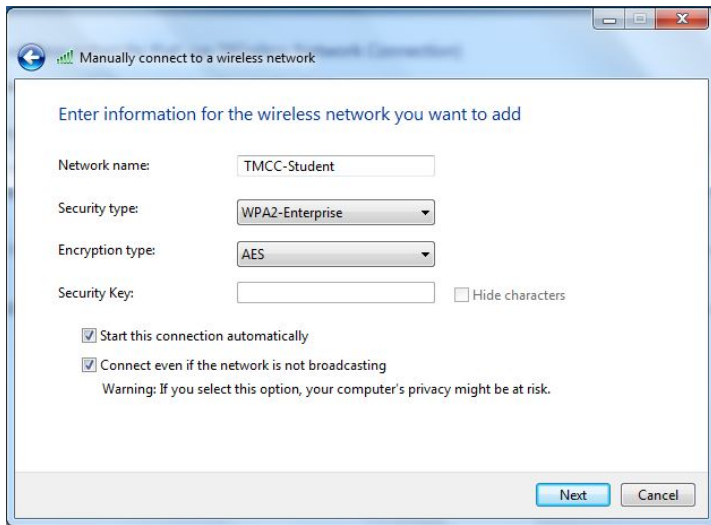
7. Click **"Manually create a network profile"**.



## Manually create a network profile

This creates a new network profile or locates an existing network and saves a profile for the network on your computer. You need to know the network name (SSID) and security key (if applicable).

8. Fill in the appropriate Network name:
  - a. For Students: TMCC-Student
  - b. For Faculty/Staff: TMCC-Admin
9. Select **'WPA2-Enterprise'** from the Security type drop-down box.
10. Make sure **'AES'** is selected for the Encryption type.
11. Leave the Security Key field **blank**.
12. Check **"Start this connection automatically."**
13. Check **"Connect even if the network is not broadcasting."**
14. Below is an example of what it should look like for students:

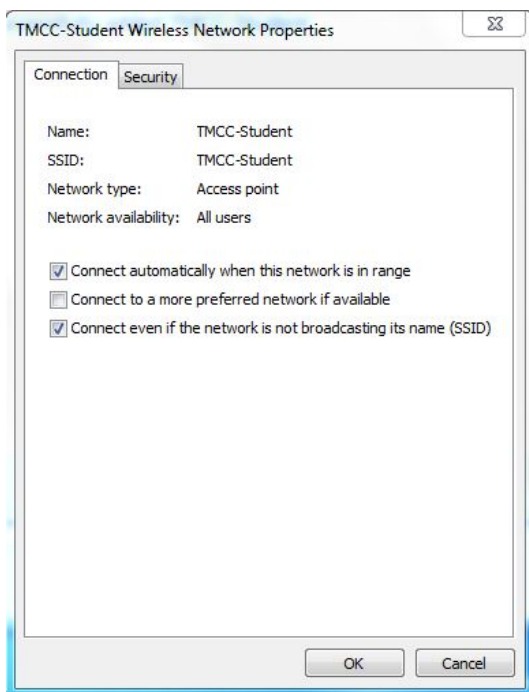


15. Click **“Next”**.
16. In the next window, select **“Change connection settings”**.

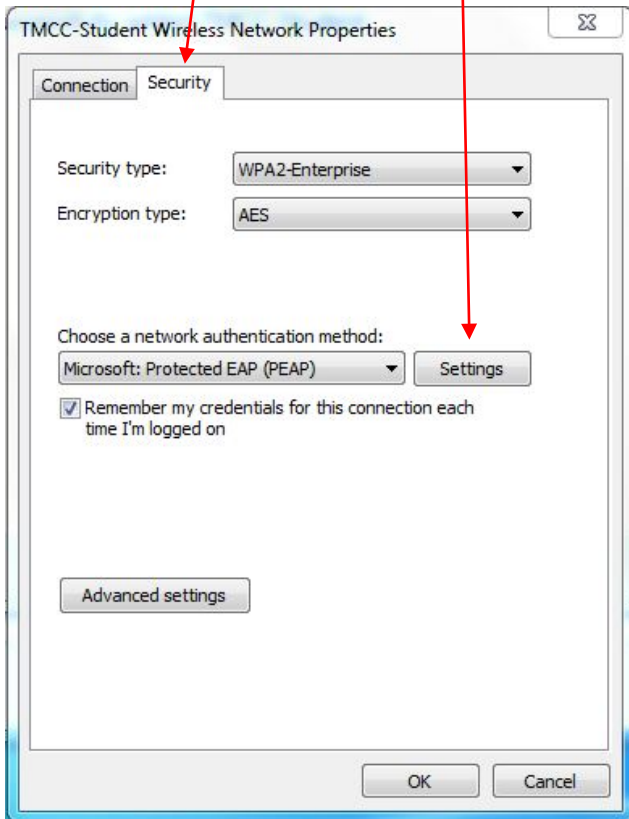
## Successfully added TMCC-Student

➔ **Change connection settings**  
Open the connection properties so that I can change the settings.

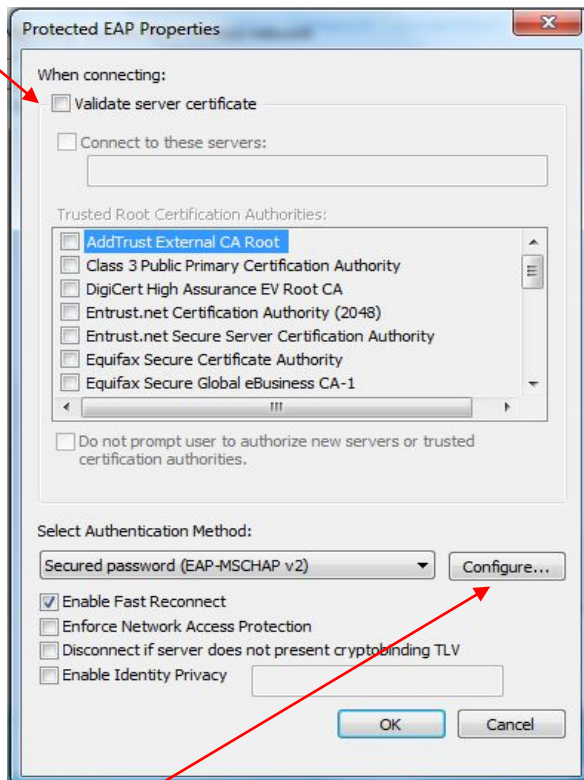
17. Make sure both **“Connect automatically when this network is in range”** and **“Connect even if the network is not broadcasting its name (SSID)”** are selected.



18. Select the **"Security"** tab and click **"Settings"**.

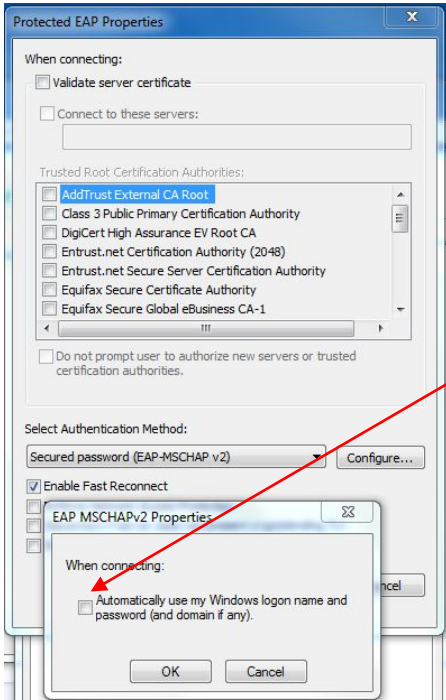


19. **Uncheck** "Validate server certificate" box is currently checked. **Uncheck/clear that check mark.**

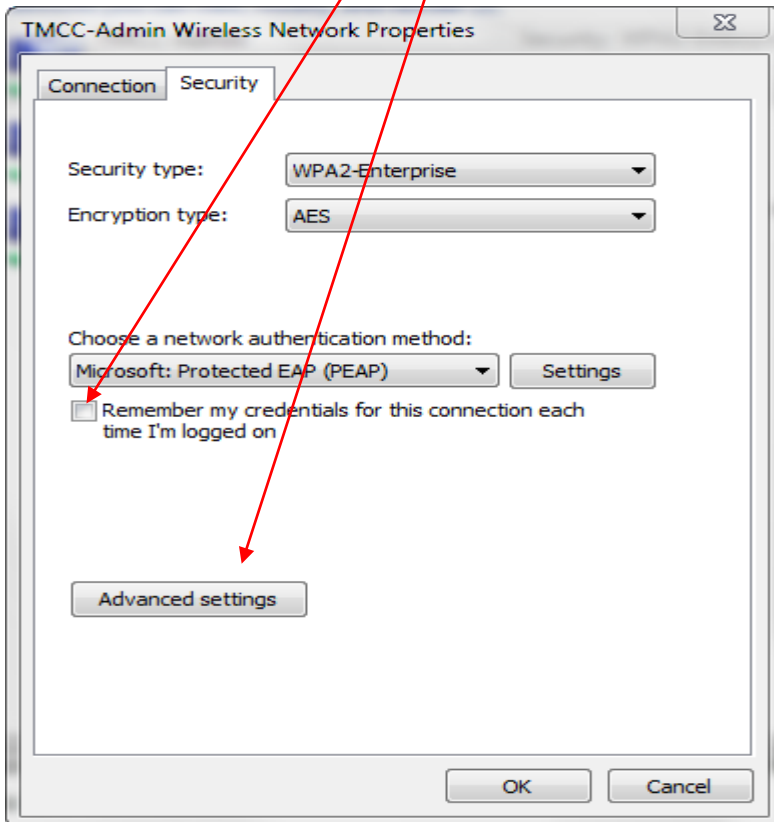


20. Select the **"Configure"** button.

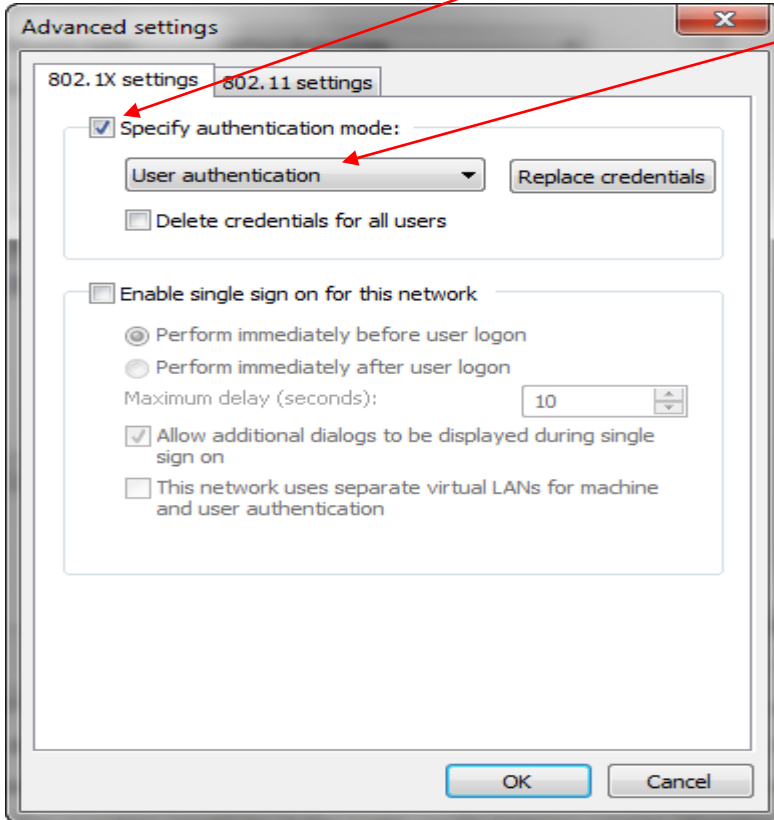
21. The “Automatically use my Windows logon name and password” box is currently checked. **Uncheck/clear that checkbox.**



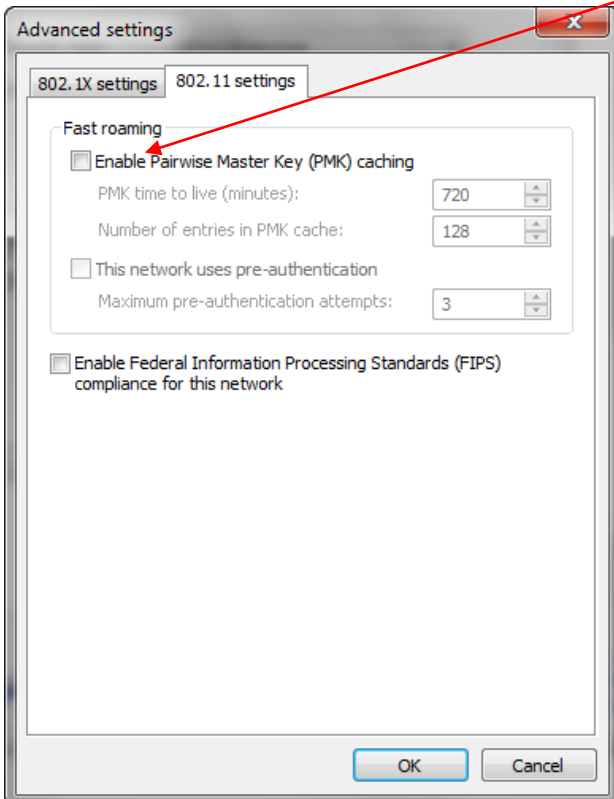
22. Click “**OK**” for the next few windows that come up until you return to the Wireless Network properties window such as the one below. Ensure the “**Remember my credentials for this connection each time I’m logged on**” is not checked. Click “**Advanced settings**”.



23. Under the 802.1x settings tab, check the **"Specify authentication mode"** and select **"User authentication"** from the drop down menu.



24. Click the **"802.11 settings"** tab. Ensure the **"Enable . . . caching"** is **unchecked**.



25. Click "**OK**" until all windows close or select "**Close**" on the last window.
26. Click on the wireless network icon (located in the lower right-hand corner of your desktop, on your Task Bar).



27. Select the newly created network (TMCC-Admin or TMCC-Student respectively) and click your right-mouse button to select "**Connect**".
28. Wait for a logon authentication window to pop up and enter your login information. Enter either your student username and password or an administrative username and password, whichever is applicable to you based on the network on which you are connected.
29. You should now be connected to the new secure TMCC wireless system. When you open your web browser, you will be able to access the Internet.

For additional questions: if you are a TMCC student, contact IT Student Support at 775- 674-7576; faculty/staff, please contact IT Customer Service at 775-673-7208.