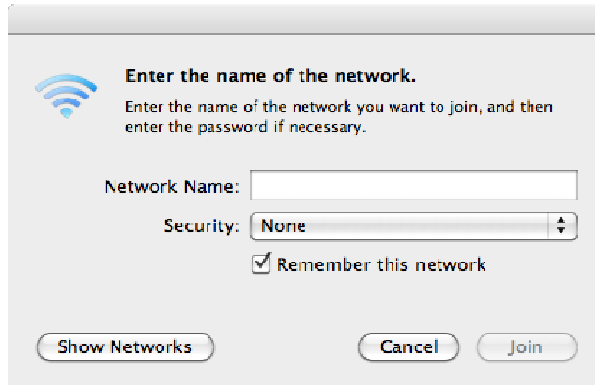
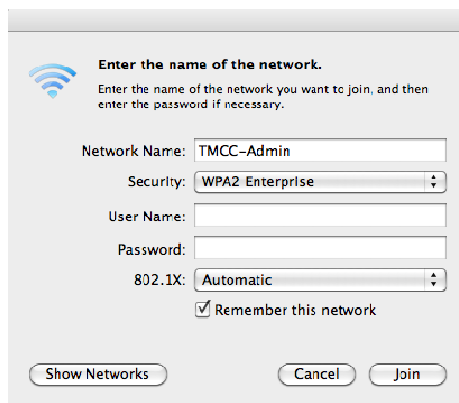


MAC OS(X) WIRELESS NETWORK SETTINGS

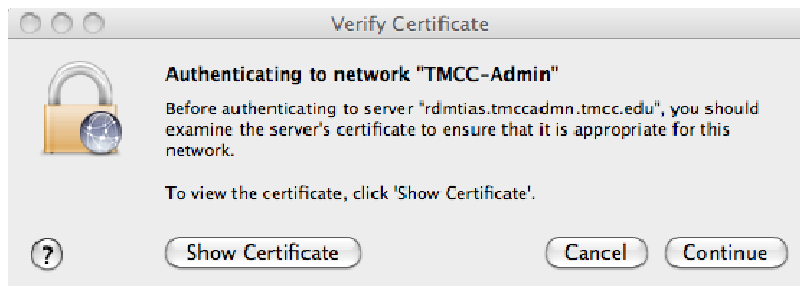
1. Click on the Airport icon.
2. Turn Airport on, and click "Join Other Network".



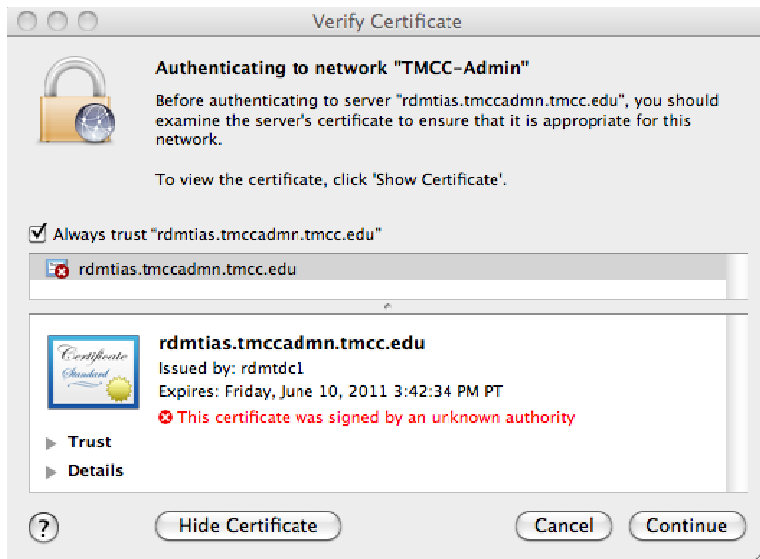
3. Network Name: Type TMCC-Admin or TMCC-Student.
4. Security: Click the drop-down arrow, and select "WPA2 Enterprise".



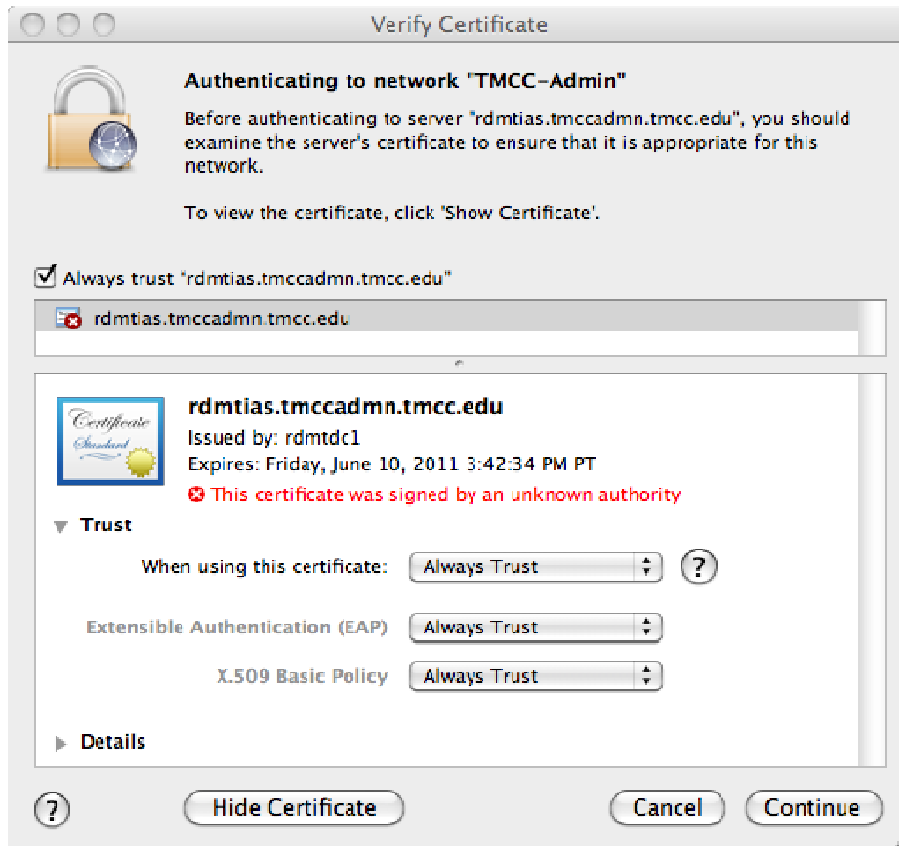
5. Type your User Name and Password; leave "Automatic" selected next to "802.1X:"
Click "Join".



6. Click "Show Certificate".



7. Click "Trust".

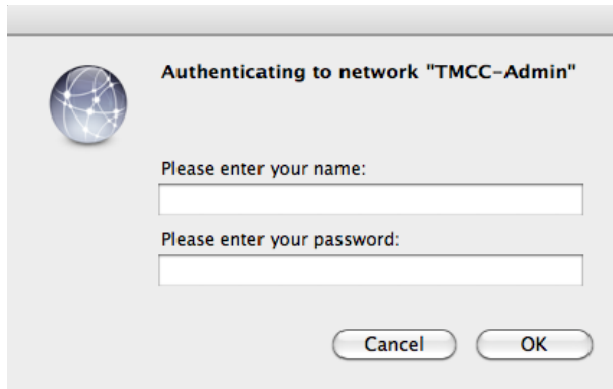


8. Click the drop-down arrows next to "When using this certificate:", and click "Always Trust".

9. Click "Continue".

You are now connected to the TMCC Wireless Network.

IMPORTANT: Whenever you log off, restart, or shutdown your computer, you must turn Airport OFF and then ON again in order to bring up the Authenticating to network "TMCC-Admin" or "TMCC-Student" window.



Enter your username and password to Authenticate.
You are now connected to the TMCC wireless network.

For additional questions: TMCC students, contact IT Student Support at 775-674-7576; faculty/staff, please contact IT Customer Service at 775-673-7800.