

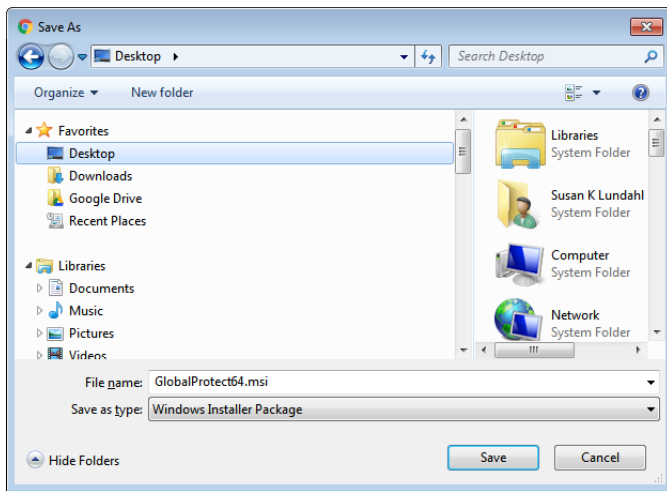
# WINDOWS 7 VPN VISUAL AID

Complete instructions for installing and connecting to the Virtual Private Network (VPN) portal, accessing GlobalProtect offsite, and remote network access (accessing files stored on the administrative file server) are available online (<http://it.tmcc.edu>).

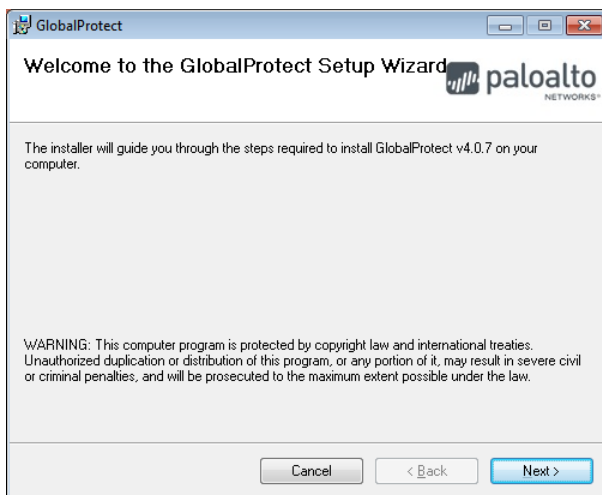
Please contact TMCC Information Technology if you require assistance.

## Instructions for Windows 7 with Visual Aids

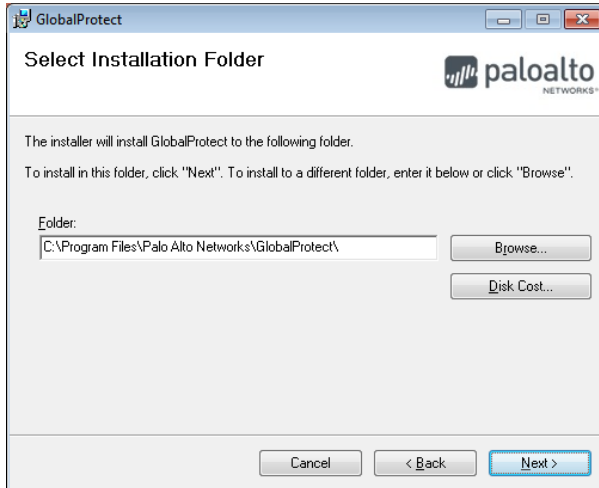
Save the "Windows Installer Package" to your desktop or downloads folder. To install, double-click on the "GlobalProtect.msi" that appears.



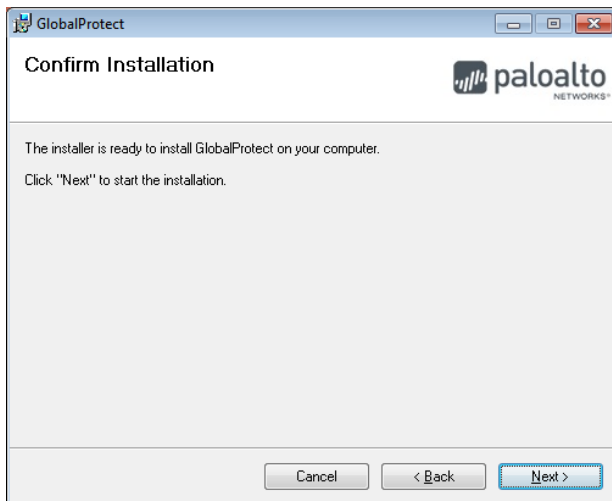
On the "Welcome to the GlobalProtect Setup Wizard" screen, click "Next".



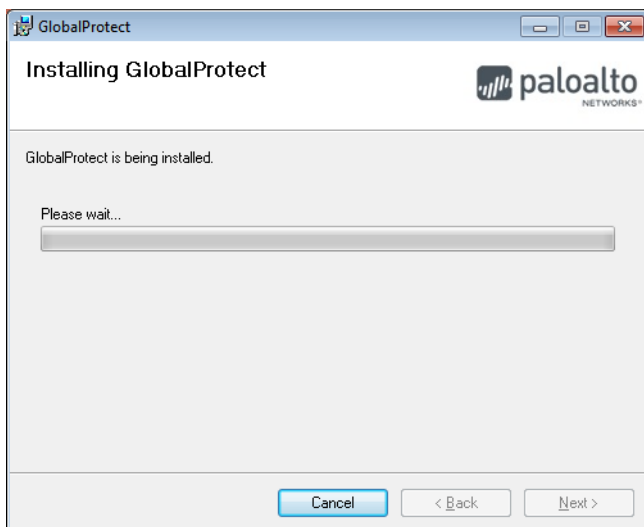
On the "Select Installation Folder" click "Next".



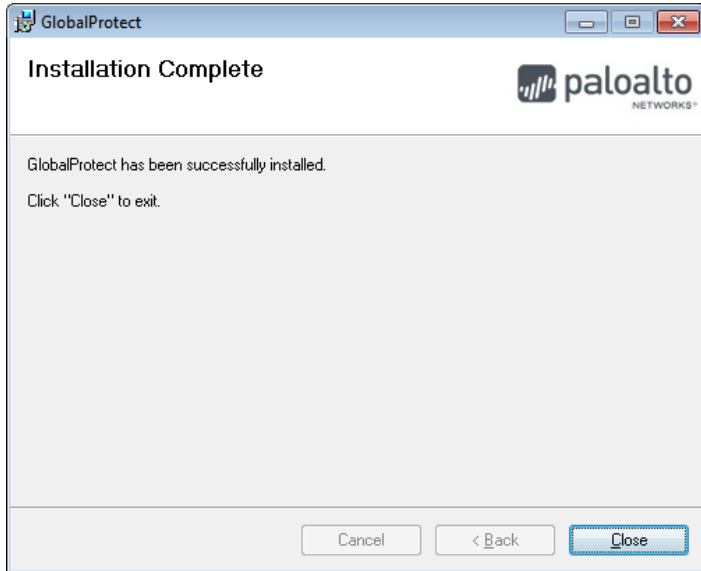
On "Confirm Installation" click "Next".



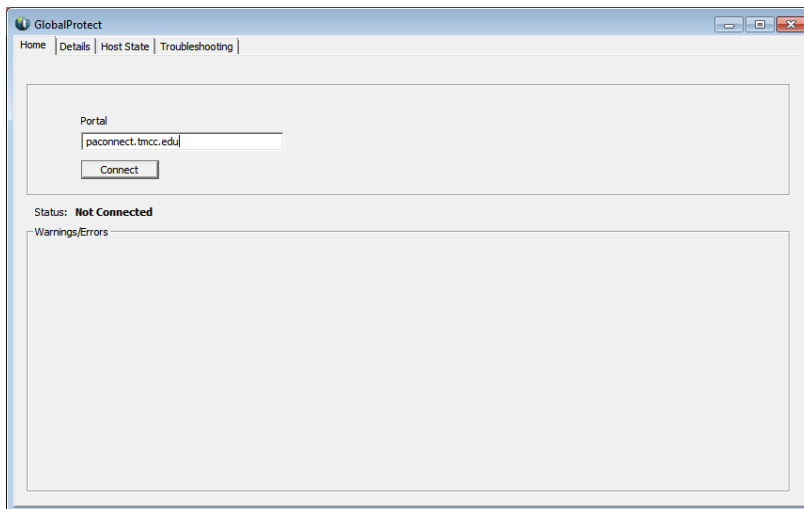
The "Installing GlobalProtect" screen will appear.



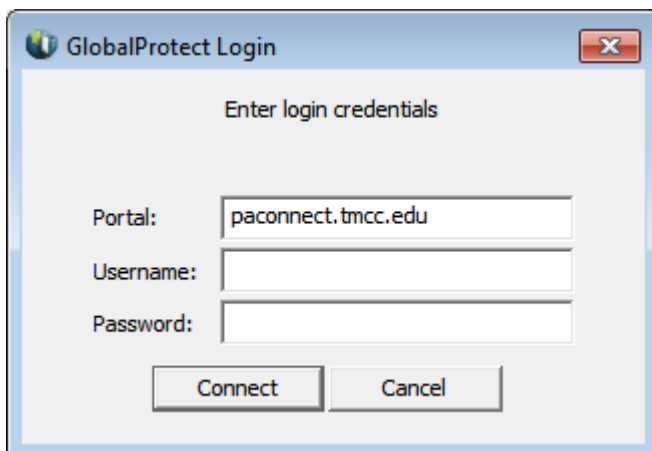
When installation is complete, click "Close".



The "GlobalProtect" screen appears. Type "paconnect.tmcc.edu" in the address line under "Portal" and click "Connect".

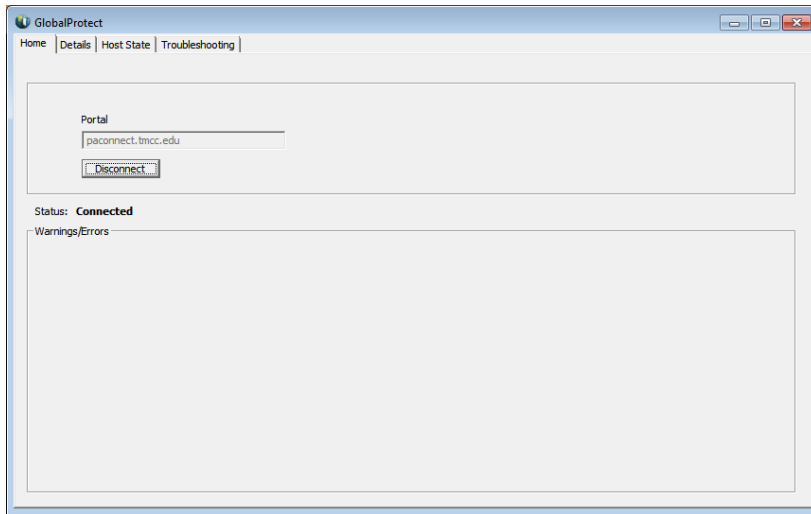


On the "GlobalProtect Login" screen, enter your TMCC network login credentials and click "Connect".



## Congratulations! You have established a VPN connection!

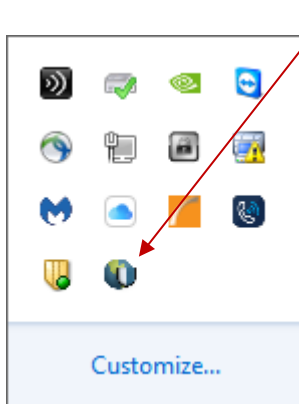
Close this window.



**Note:** You will not need to follow these steps in the future on this machine.

## Disconnecting from SSL VPN

Right click on the GlobalProtect VPN Client icon on the bottom right of your task bar.



Click "Disconnect" on the pop-up menu.

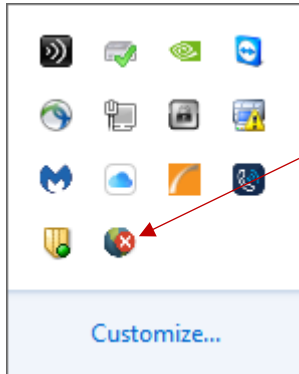
If the icon is hidden, click on the arrow next to the system tray to "show hidden icons".



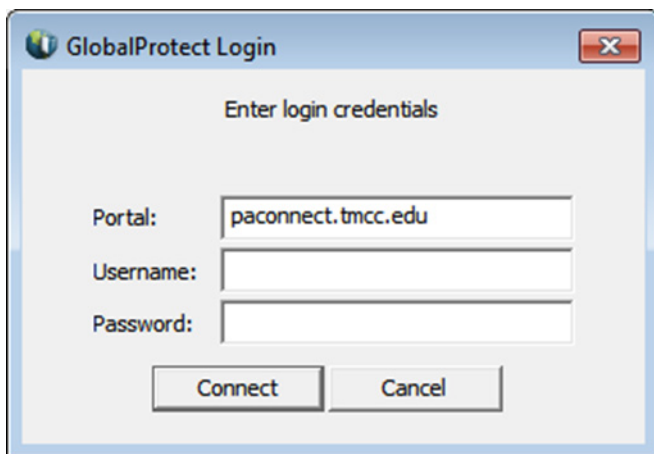
## Connecting to SSL VPN After Initial Installation

Right click on the GlobalProtect VPN Client" icon on the bottom right of your screen and click "Connect" on the pop-up menu.

Notice there is no connection established when there is a red "X".



The Portal address is "paconnect.tmcc.edu". Enter your TMCC network username and password and click "Connect."



**Your VPN connection is now established.**