



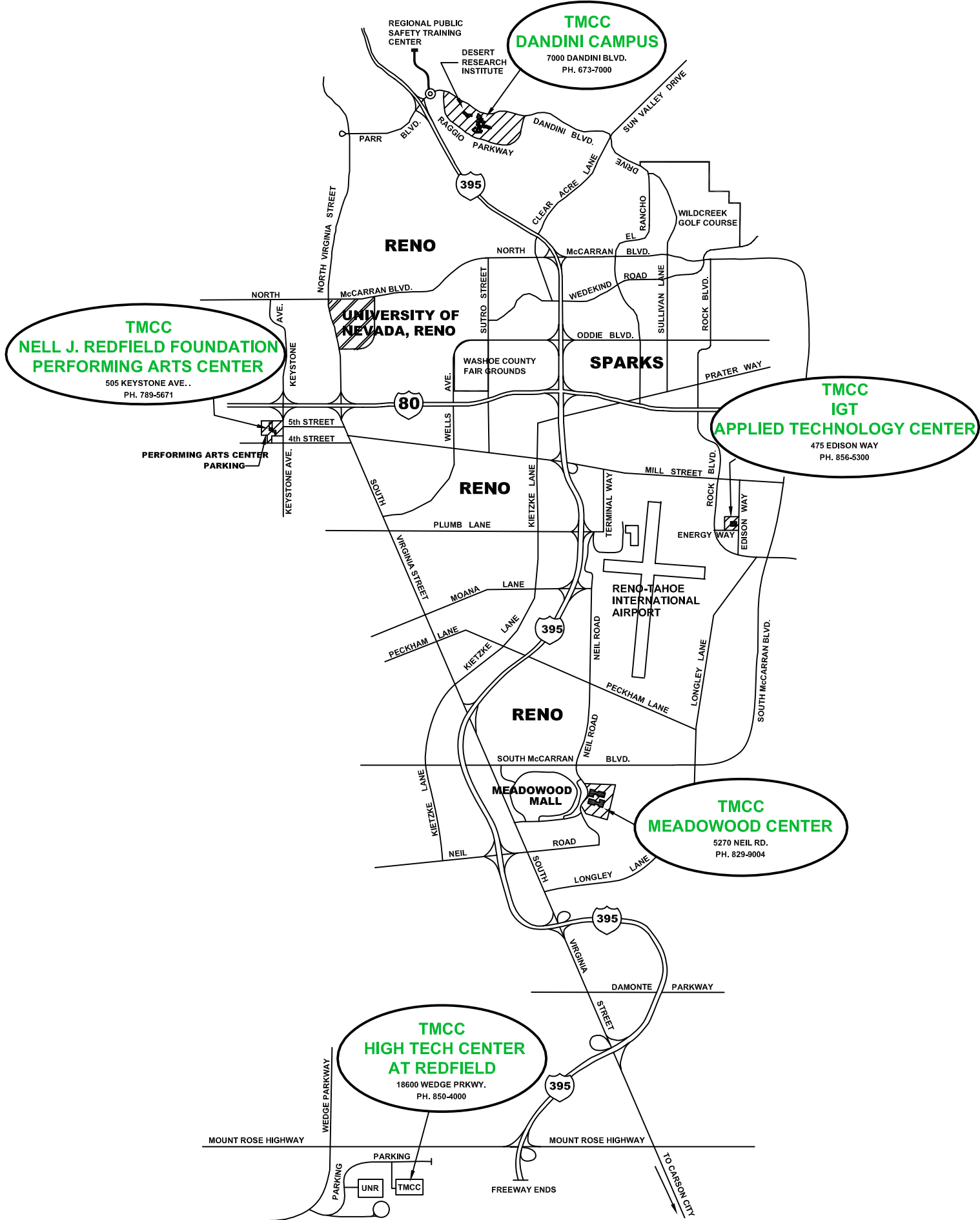
Property Inventory Report – 2010

Table of Contents

Introduction	1.
Property Listings	2.
Vicinity Map	3.
Dandini Campus	4.
IGT-Applied Technology Center	5.
Meadowood Center	6.
Redfield High Tech Center	7.
Redfield Performing Arts Center	8.

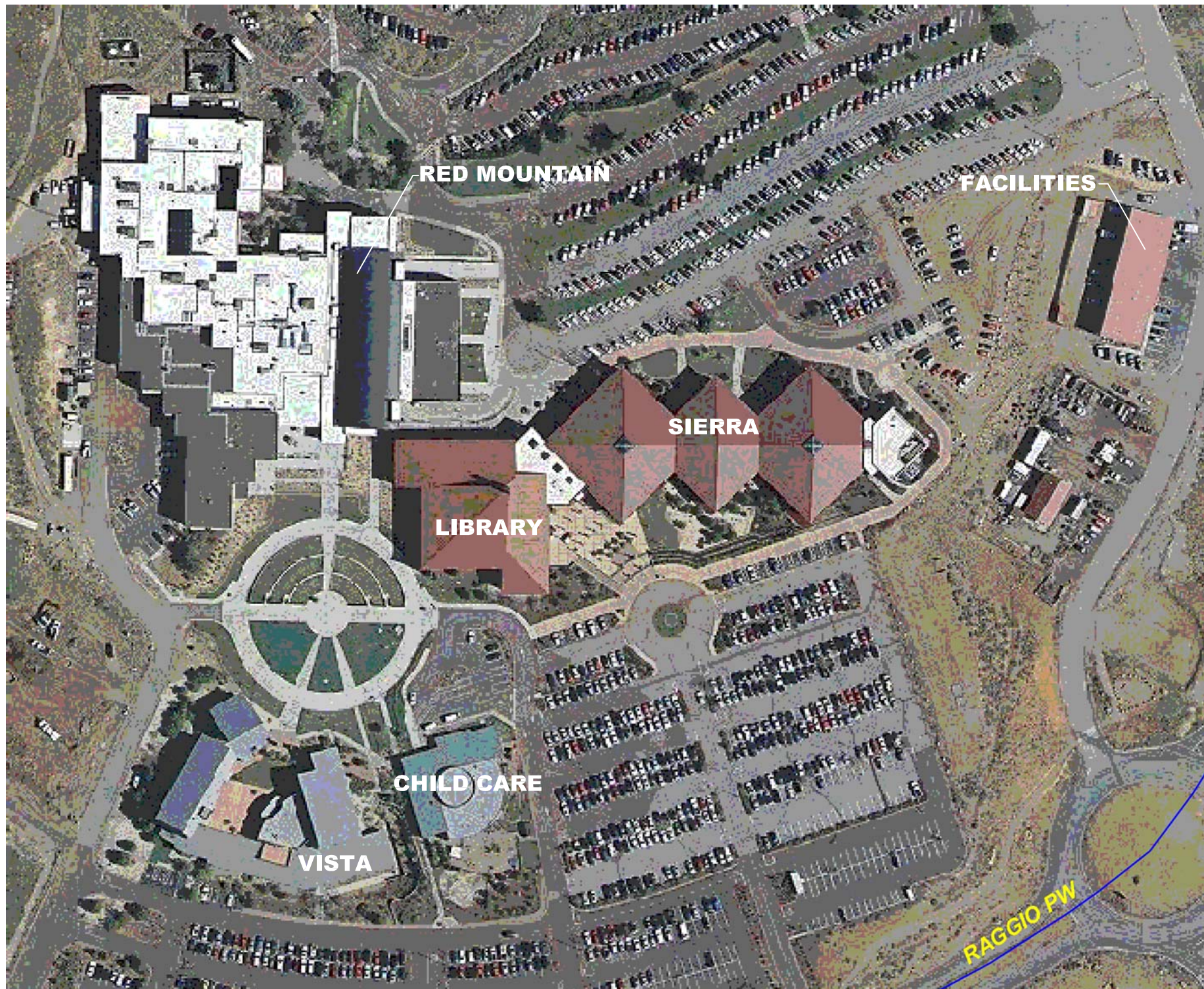
TRUCKEE MEADOWS COMMUNITY COLLEGE
Property Listings for 2010

Site	Building / Property	Acres	Year Built/Additions	Bldg. ASF	GSF	Water Rights acre/ft	Mineral Rights	Purpose	APN	Owned/ Leased
Dandini	7000 Dandini Blvd Reno, NV	64.9				None	Unknown	Main Campus with facility expansion capabilities	035-012-01	Owned
Dandini	Red Mountain		1976/1980/1985/1987/2004	155,947	249,360			General Education		Owned
Dandini	Vista		1992	23,699	45,187			General Education		Owned
Dandini	Sierra		1996	48,902	78,386			General Education		Owned
Dandini	Library		1995	28,220	37,116			Library Services		Owned
Dandini	Child Care Center		1992	7,223	9,748			Child Care Services		Owned
Dandini	Facilities Services		2003	7,241	9,404			Facilities Services		Owned
Total		64.9			429,201					
Keystone	Redfield Performing Arts Center, 505 Keystone Ave	0	1966	8,619	11,703	None	n/a	Performing Arts Education and Presentation		Leased Space
Meadowood	5250 Niel Road	2.47	1985	34,475	46,668	2.47		Leased to a Commercial Property Management Company	025-551-09	Owned
Meadowood	5270 Niel Road	2.55	1985	34,475	46,668	2.08		General Education	025-551-10	Owned
Meadowood	5250 Wild Rose Dr.	0.77				9.26	Unkown	Vacant	025-403-09	Owned
Meadowood	Wild Rose	0.91				9.6	Unkown	Vacant	025-403-12	Owned
IGT/ Edison	Applied Technology Center Building 475 Edison Way	4.8	1976	63,963	96,296	None	Unknown	Applied Technology Education Site includes building, storage lot, & parking lot	012-361-10	Owned
Redfield-B	Redfield High-Tech Center for TMCC 18600 Wedge Pkwy	4.59	2005	20,765	34,542	4.12	Unknown	Collaborative 60 acre campus shared with other NSHE colleges.	144-070-17	Owned
Reno	Facilities Storage (Panther Valley)	NA	Feb-03	2,000	2,000	None	Unknown	Furniture / Supplies Storage	NA	Leased Space
Reno	TMCC Police Department Storage (Longely Lane)	NA	1-May-07	1,901	1,901	None	Unknown	Storage	NA	Leased Space
		80.99		433,529	665,078					



**TRUCKEE MEADOWS COMMUNITY COLLEGE
RENO VICINITY MAP**

Dandini Campus



RED MOUNTAIN

FACILITIES

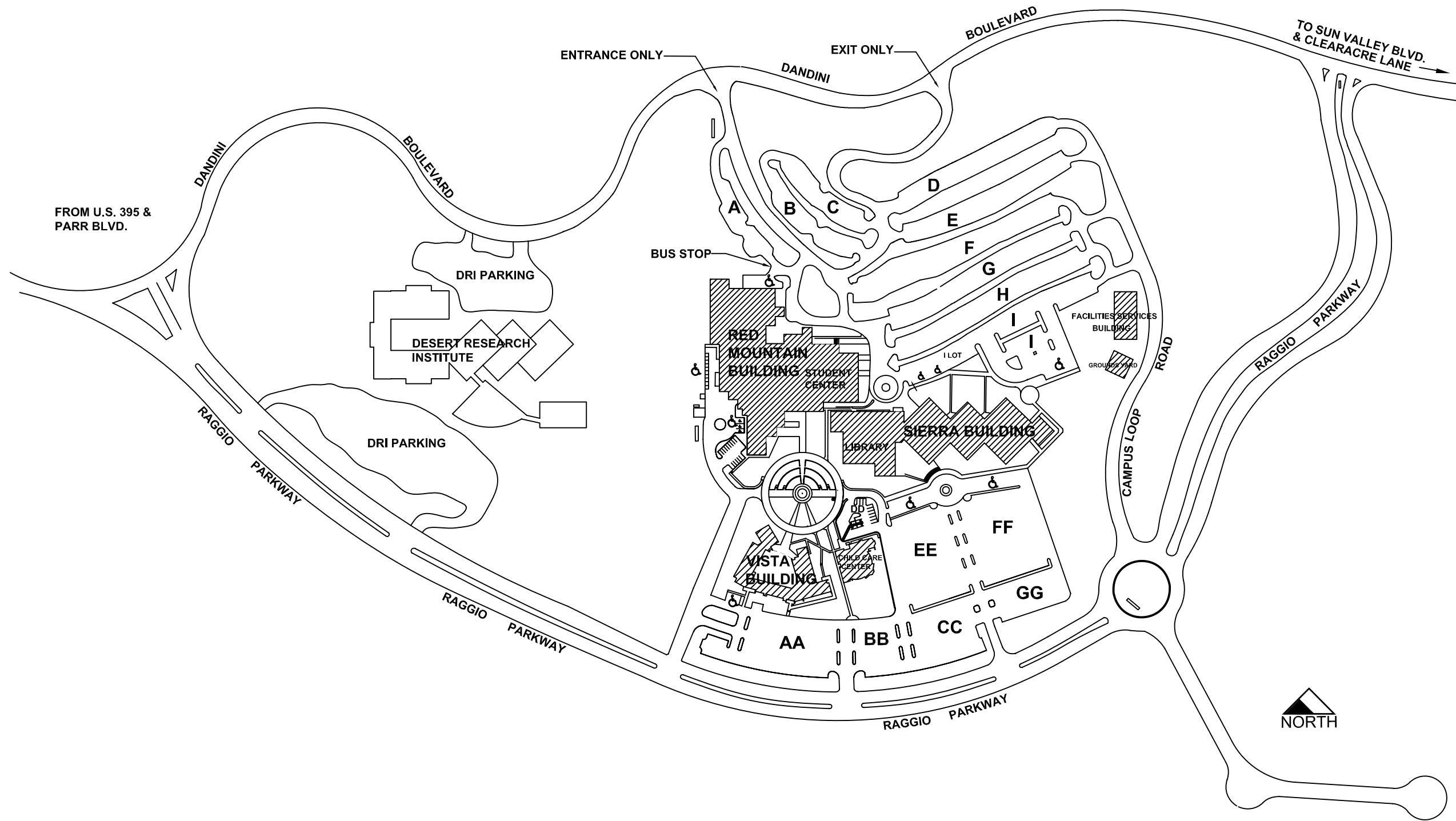
SIERRA

LIBRARY

CHILD CARE

VISTA

RAGGIO PW



FACILITY SERVICES
 7000 DANDINI BLVD.
 RENO, NEVADA 89512
 P. 775-673-7000
 F. 775-673-7112

JOB NAME: Truckee Meadows Community College
 Dandini Campus
 7000 Dandini Blvd. Reno, NV 89512
 SHEET TITLE: SITE PLAN

SCALE: NTS
 DATE: 2/8/07
 REV:

SHEET #

FROM U.S. 395 &
 PARR BLVD.

TO SUN VALLEY BLVD.
 & CLEARACRE LANE

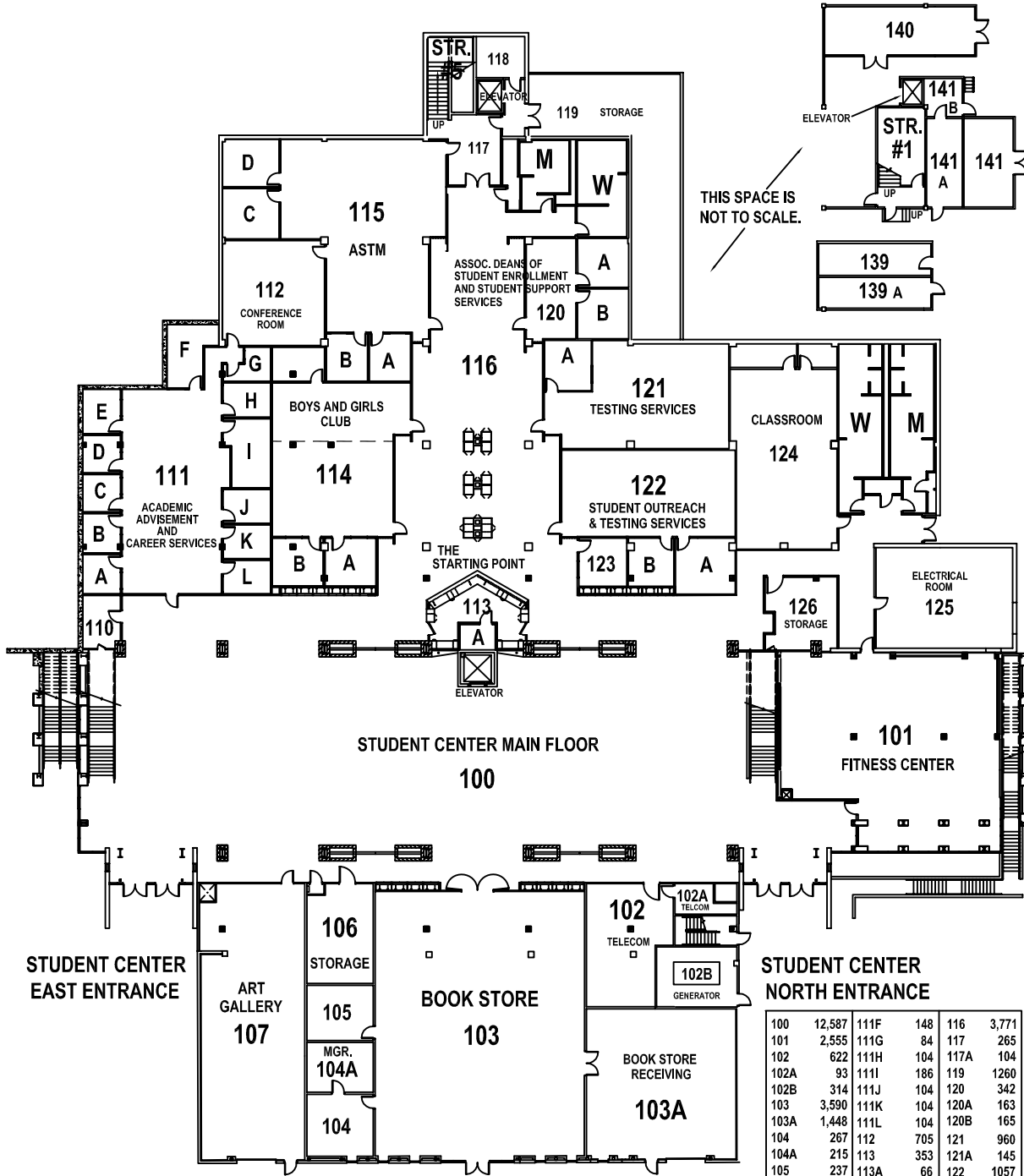




Danindi Campus



Red Mountain Building – Student Services Center

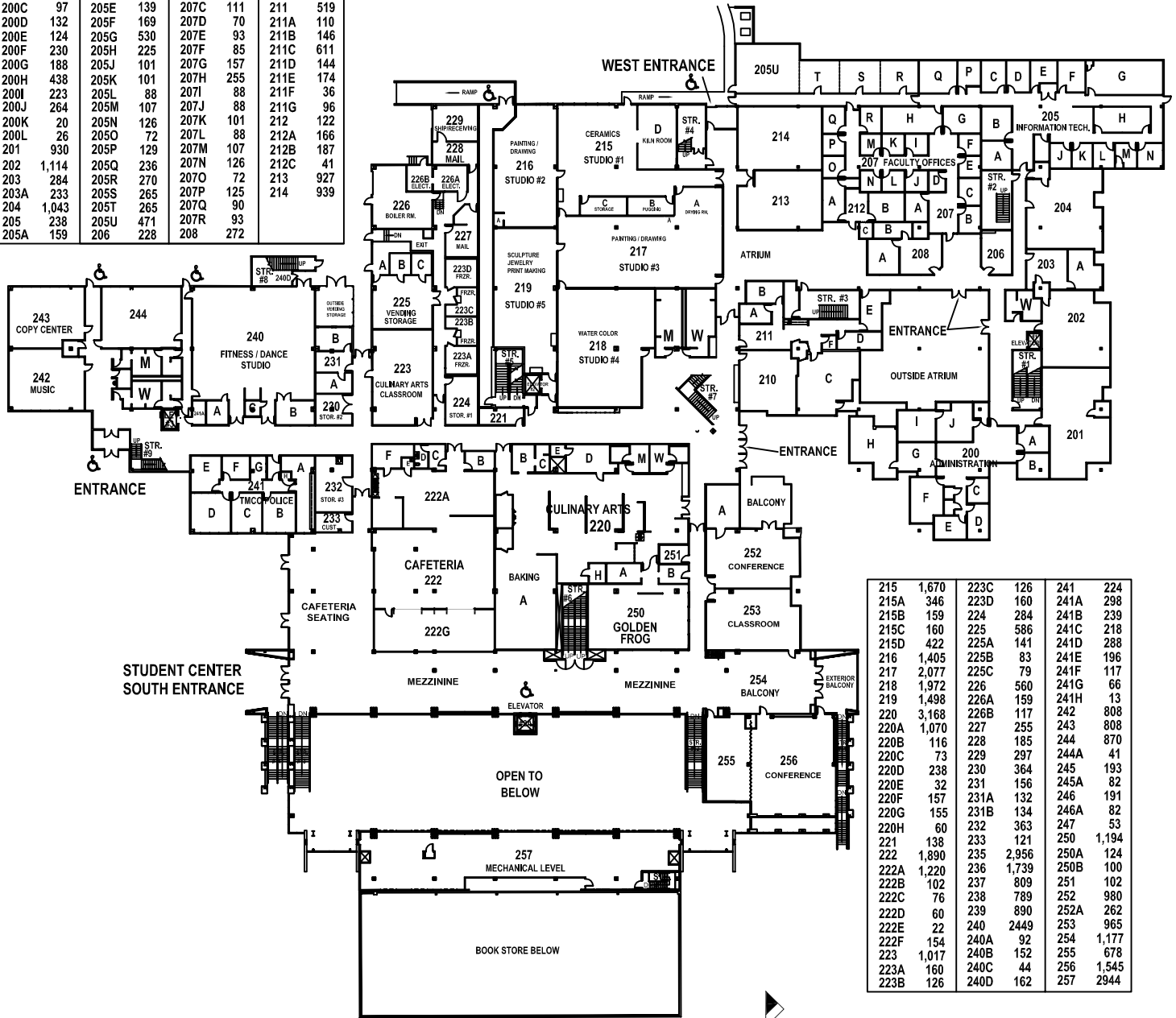


THIS SPACE IS NOT TO SCALE.

100	12,587	111F	148	116	3,771
101	2,555	111G	84	117	265
102	622	111H	104	117A	104
102A	93	111I	186	119	1260
102B	314	111J	104	120	342
103	3,590	111K	104	120A	163
103A	1,448	111L	104	120B	165
104	267	112	705	121	960
104A	215	113	353	121A	145
105	237	113A	66	122	1057
106	363	114	1,168	122A	215
107	1,819	114A	100	122B	142
110	97	114B	100	123	143
111	1,406	114C	116	124	1393
111A	94	115	1,744	124A	437
111B	94	115A	112	124B	431
111C	90	115B	112	124C	50
111D	90	115C	191	125	1043
111E	107	115D	191	126	243

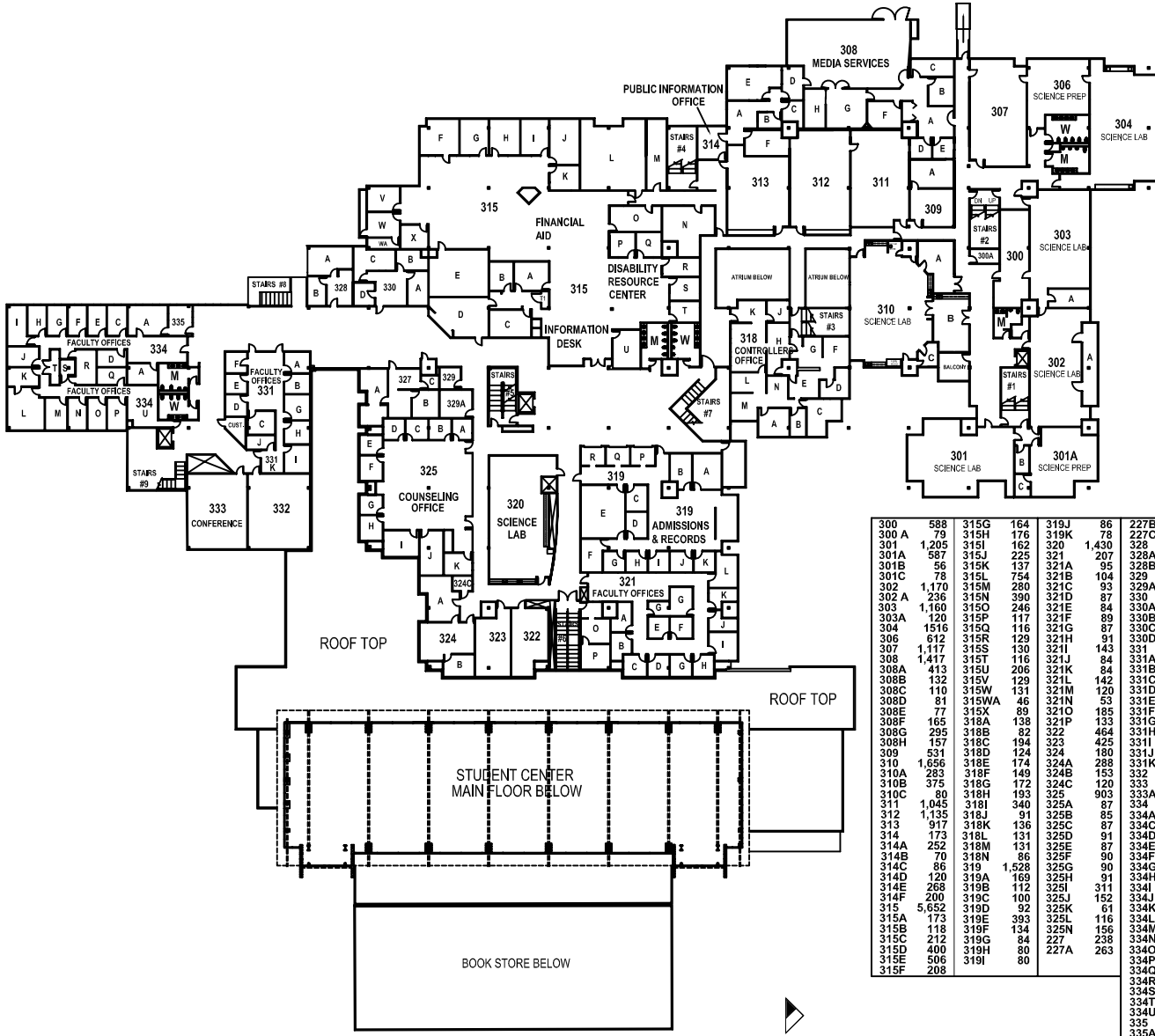
SHEET # SCALE: N.T.S. DATE: 2-8-07 REV:	<h1 style="margin: 0;">Red Mountain Building</h1>	JOB NAME: SHEET TITLE:	FACILITY SERVICES 7000 DANDINI BLVD. RENO, NEVADA 89512 P. 775-673-7000 F. 775-673-7112	<p style="font-size: 2em; font-weight: bold; margin: 0;">TMCC</p> <p style="font-size: 0.8em; margin: 0;">Truckee Meadows Community College</p>
<h2 style="margin: 0;">FIRST FLOOR PLAN</h2>				

200	429	205B	166	207	204	208A	197
200A	137	205C	156	207A	112	208B	111
200B	132	205D	148	207B	100	210	657
200C	97	205E	139	207C	111	211	519
200D	132	205F	169	207D	70	211A	110
200E	124	205G	530	207E	93	211B	146
200F	230	205H	225	207F	85	211C	611
200G	188	205J	101	207G	157	211D	144
200H	438	205K	101	207H	255	211E	174
200I	223	205L	88	207I	88	211F	36
200J	264	205M	107	207J	88	211G	96
200K	20	205N	126	207K	101	212	122
200L	26	205O	72	207L	88	212A	166
201	930	205P	129	207M	107	212B	187
202	1,114	205Q	236	207N	126	212C	41
203	284	205R	270	207O	72	213	927
203A	233	205S	265	207P	125	214	939
204	1,043	205T	265	207Q	90		
205	238	205U	471	207R	93		
205A	159	206	228	208	272		



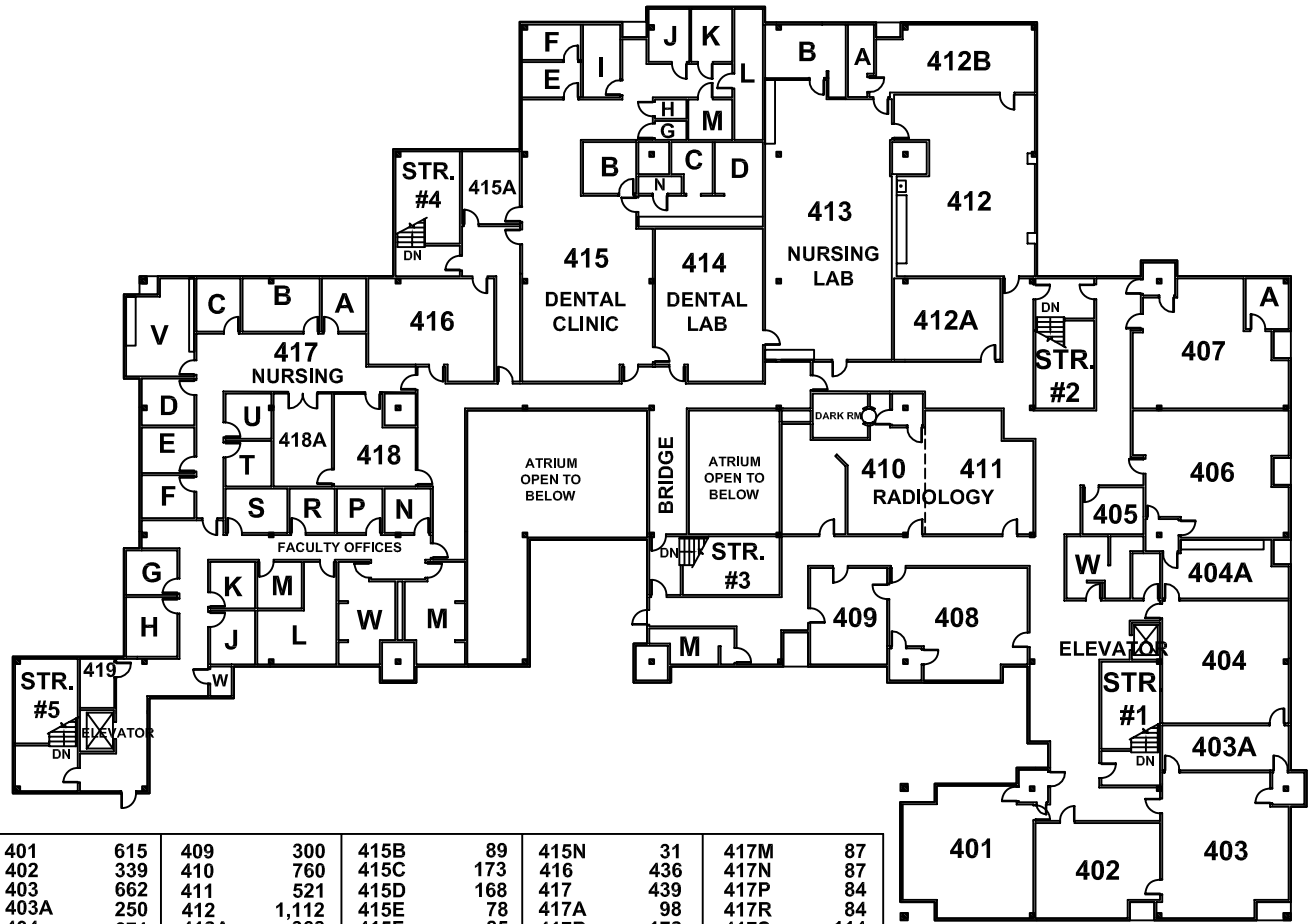
215	1,670	223C	126	241	224
215A	346	223D	160	241A	298
215B	159	224	284	241B	239
215C	160	225	586	241C	218
215D	422	225A	141	241D	288
216	1,405	225B	83	241E	196
217	2,077	225C	79	241F	117
218	1,972	226	560	241G	66
219	1,498	226A	159	241H	13
220	3,168	226B	117	242	808
220A	1,070	227	255	243	808
220B	116	228	185	244	870
220C	73	229	297	244A	41
220D	238	230	364	245	193
220E	32	231	156	245A	82
220F	157	231A	132	246	191
220G	155	231B	134	246A	82
220H	60	232	363	247	53
221	138	233	121	250	1,194
222	1,890	235	2,956	250A	124
222A	1,220	236	1,739	250B	100
222B	102	237	809	251	102
222C	76	238	789	252	980
222D	60	239	890	252A	262
222E	22	240	2449	253	965
222F	154	240A	92	254	1,177
223	1,017	240B	152	255	678
223A	160	240C	44	256	1,545
223B	126	240D	162	257	2944

SHEET #	SCALE: N.T.S.	Red Mountain Building	JOB NAME:	FACILITY SERVICES 7000 DANDINI BLVD. RENO, NEVADA 89512 P. 775-673-7000 F. 775-673-7112	 TMCC Truckee Meadows Community College
	DATE: 2-8-07		SHEET TITLE:		
	REV:		SECOND FLOOR PLAN		



300	588	315G	164	319J	86	227B	140
300 A	79	315H	176	319K	78	227C	43
301	1,205	315I	162	320	1,430	328	157
301A	587	315J	225	321	207	328A	225
301B	56	315K	137	321A	95	328B	100
301C	78	315L	754	321B	104	329	83
302	1,170	315M	280	321C	93	329A	168
302 A	236	315N	390	321D	87	330	216
303	1,160	315O	246	321E	84	330A	149
303A	120	315P	117	321F	89	330B	118
304	1516	315Q	116	321G	87	330C	97
306	612	315R	129	321H	91	330D	185
307	1,117	315S	130	321I	143	331	442
308	1,417	315T	116	321J	84	331A	88
308A	413	315U	206	321K	84	331B	83
308B	132	315V	129	321L	142	331C	116
308C	110	315W	131	321M	120	331D	86
308D	81	315WA	46	321N	53	331E	80
308E	77	315X	89	321O	185	331F	84
308F	165	318A	138	321P	133	331G	86
308G	295	318B	82	322	464	331H	98
308H	157	318C	194	323	425	331I	118
309	531	318D	124	324	180	331J	72
310	1,656	318E	174	324A	288	331K	94
310A	283	318F	149	324B	153	332	853
310B	375	318G	172	324C	120	333	853
310C	80	318H	193	325	903	333A	77
311	1,045	318I	340	325A	87	334	293
312	1,135	318J	91	325B	85	334A	116
313	917	318K	136	325C	87	334C	110
314	173	318L	131	325D	91	334D	99
314A	252	318M	131	325E	87	334E	109
314B	70	318N	86	325F	90	334F	109
314C	86	319	1,529	325G	90	334G	109
314D	120	319A	169	325H	91	334H	109
314E	268	319B	112	325I	311	334I	175
314F	200	319C	100	325J	152	334J	112
315	5,652	319D	92	325K	61	334K	112
315A	173	319E	393	325L	116	334L	260
315B	118	319F	134	325M	156	334M	108
315C	212	319G	84	227	238	334N	108
315D	400	319H	80	227A	263	334O	109
315E	506	319I	80			334P	110
315F	208					334Q	99
						334R	136
						334S	45
						334T	60
						334U	222
						335	123
						335A	205

SHEET #	SCALE: N.T.S.	JOB NAME:	
DATE: 2-8-07	Red Mountain Building		FACILITY SERVICES
REV:	THIRD FLOOR PLAN		7000 DANDINI BLVD.
	SHEET TITLE:		RENO, NEVADA 89512
			P. 775-673-7000
			F. 775-673-7112
			TMCC Truckee Meadows Community College



401	615	409	300	415B	89	415N	31	417M	87
402	339	410	760	415C	173	416	436	417N	87
403	662	411	521	415D	168	417	439	417P	84
403A	250	412	1,112	415E	78	417A	98	417R	84
404	671	412A	368	415F	85	417B	172	417S	114
404A	250	412B	431	415G	25	417C	98	417T	87
404B	52	413	1,432	415H	25	417D	103	417U	87
404C	175	413A	76	415I	79	417E	100	417V	255
405	120	413B	137	415J	70	417F	94	417W	26
406	713	414	681	415K	75	417G	96	418	228
407	583	415	1,453	415L	135	417H	129	418A	270
407A	88	415A	173	415M	85	417J	101	419	70
408	583					417K	87	420	207
						417L	244	421	228



SHEET #	SCALE: N.T.S.	Red Mountain Building	JOB NAME:	TMCC Truckee Meadows Community College
	DATE: 2-8-07			
	REV:			
		FOURTH FLOOR PLAN	SHEET TITLE:	FACILITY SERVICES 7000 DANDINI BLVD. RENO, NEVADA 89512 P. 775-673-7000 F. 775-673-7112



Vista Building



FACILITY SERVICES
 7000 DANDINI BLVD.
 RENO, NEVADA 89512
 P. 775-673-7000
 F. 775-673-7112

JOB NAME:

VISTA BLDG.
 7000 DANDINI BLVD. RENO, NV

SHEET TITLE:

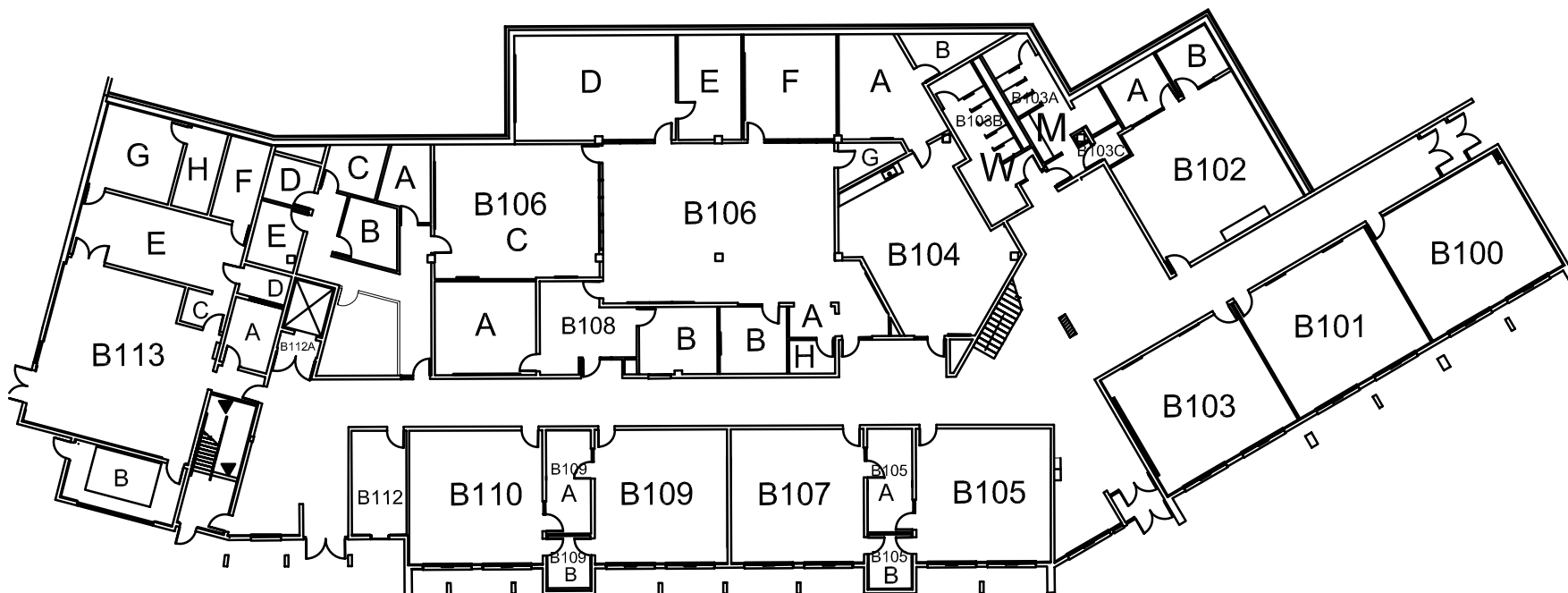
FIRST FLOOR PLAN

SCALE: N.T.S.

DATE: 2-8-07

REV:

SHEET #



B 100	635	B 105	573	B 106F	292	B 110	565	SUPPORT:	B 113E	354	CIRCULATION: CORRIDOR: 3,414 ELEV. LOBBY 26 STAIRWAYS: 199 3,639	
B 101	645	B 105A	151	B 106H	50	B 111	470	B 103A	273	B 113F		213
B 102	692	B 105B	77	B 107	560	B 111A	103	B 103B	255	B 113G		107
B 102A	100	B 106	1,289	B 108	228	B 111B	106	B 103C	29	B 113H		96
B 102B	91	B 106A	53	B 108A	304	B 111C	67	B 113	913		2,641	
B 103	635	B 106B	143	B 108B	168	B 111D	67	B 113A	98			
B 104	730	B 106C	691	B 109	560	B 111E	93	B 113B	212			
B 104A	276	B 106D	520	B 109A	148	B 112	179	B 113C	46			
B 104B	83	B 106E	203	B 109B	74			B 113D	45			
							11,621					GROSS SF 17,901

JOB NAME:

VISTA BLDG.
7000 DANDINI BLVD. RENO, NV

SHEET TITLE:

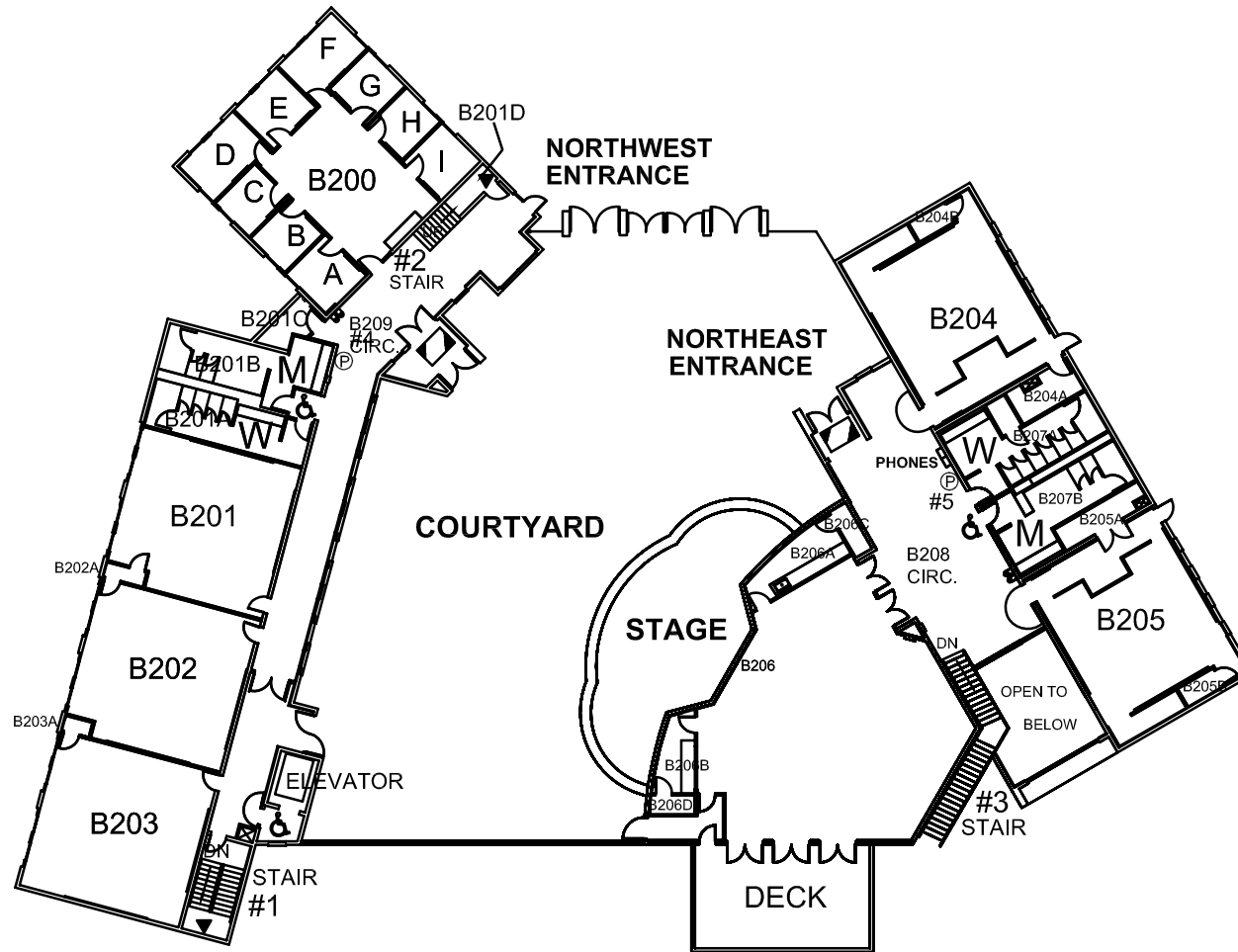
SECOND FLOOR PLAN

SCALE: N.T.S.

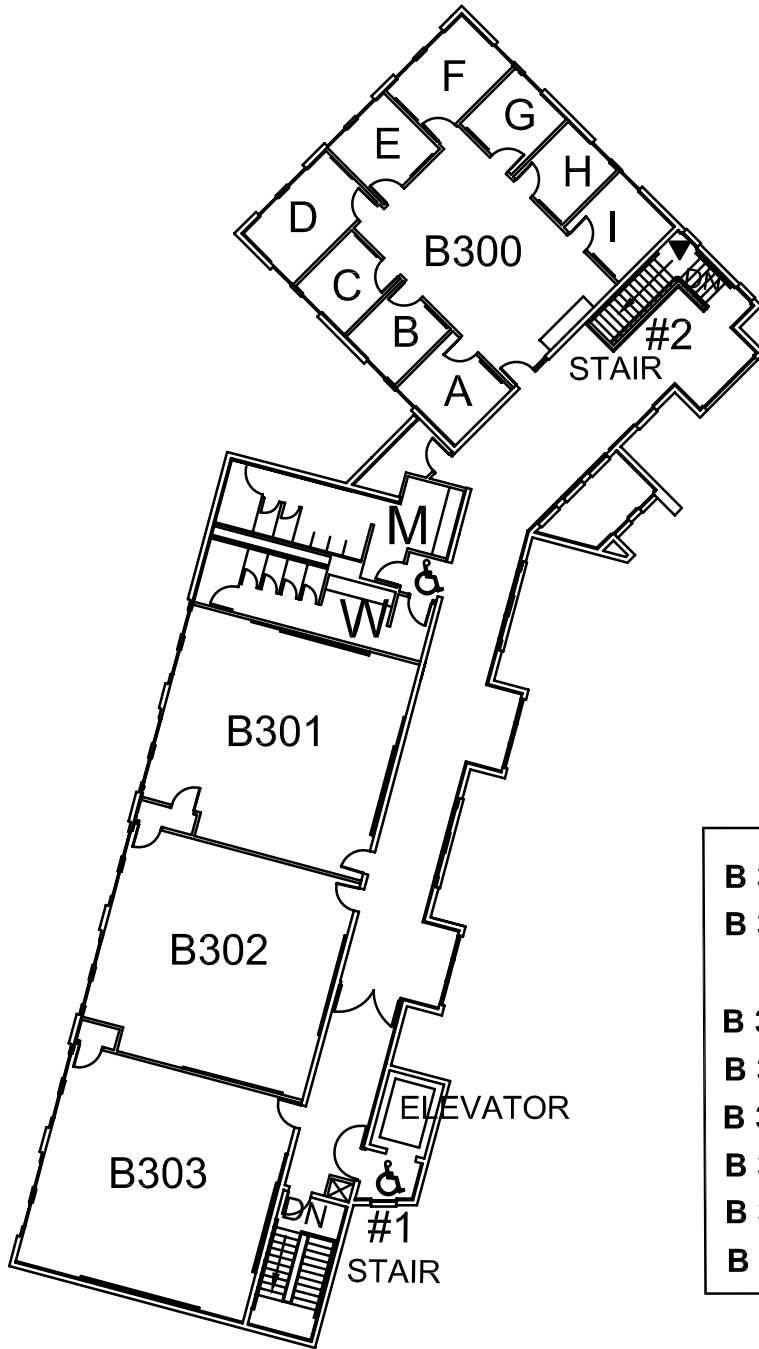
DATE: 2-8-07

REV:

SHEET #



B 200	545	B 203	906	CIRCULATION: B208 CIRC. 1,211 B209 CIRC. 1,861 ELEV. LOBBY 43 3,115	SUPPORT: B 201A 261 B 201B 288 B 201C 58 B 201D 38 B 202A 23 B 203A 23 B 207A 324 B 207B 283 1,298
B 200A	112	B 204	947		
B 200B	92	B 204A	87		
B 200C	92	B 204B	37	AUDITORIUM B206 DECK 638 SF (NOT INCLUDED)	GROSS SF 12,886
B 200D	143	B 205	947		
B 200E	106	B 205A	77		
B 200F	132	B 205B	37		
B 200G	95	B 206	1,884		
B 200H	90	B 206A	146		
B 200I	103	B 206B	98		
B 201	858	B 206C	34		
B 202	875	B 206D	30		
			8,473		



B 300	554	B 300I	103	SUPPORT:		
B 300A	112	B 301	854		B 301A	251
		B 302	866		B 301B	277
		B 303	895	B 301C	57	
			4,134	B 302A	23	
B 300C	92			B 303A	23	
B 300D	143				615	
B 300E	106					
B 300F	132	CIRCULATION:				
B 300G	95	B304 CIRC.	1,725			
B 300H	90	ELEV. LOBBY	43			
			1,768	GROSS SF		
				6,517		



FACILITY SERVICES
7000 DANDINI BLVD.
RENO, NEVADA 89512
P. 775-673-7000
F. 775-673-7112

JOB NAME:

VISTA BLDG.
7000 DANDINI BLVD. RENO, NV

SHEET TITLE:

THIRD FLOOR PLAN

SCALE: N.T.S.

DATE: 2-8-07

REV:

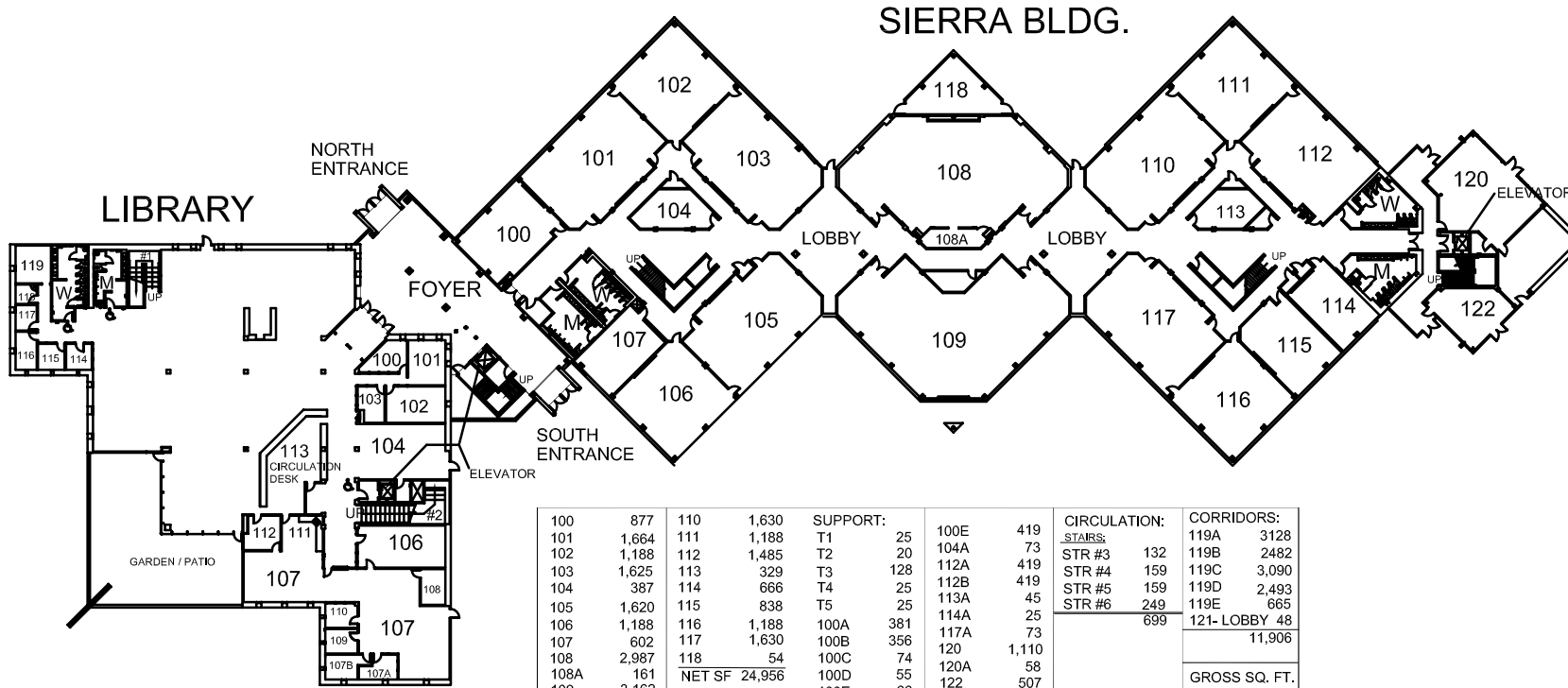
SHEET #



Sierra Building



Library



100	877	110	1,630	SUPPORT:	100E	419	CIRCULATION:	CORRIDORS:	
101	1,664	111	1,188	T1	25	104A	73	119A	3128
102	1,188	112	1,485	T2	20	112A	419	119B	2482
103	1,625	113	329	T3	128	112B	419	119C	3,090
104	387	114	666	T4	25	113A	45	119D	2,493
105	1,620	115	838	T5	25	114A	25	119E	665
106	1,188	116	1,188	100A	381	117A	73	121- LOBBY	48
107	602	117	1,630	100B	356	120	1,110		11,906
108	2,987	118	54	100C	74	120A	58		
108A	161		24,956	100D	55	122	507		
109	3,162			100E	66		4,278	GROSS SQ. FT.	41,839

JOB NAME:

LIBRARY & SIERRA BLDG.
7000 DANDINI BLVD. RENO, NV

SHEET TITLE:

FIRST FLOOR PLAN

SCALE: N.T.S.

DATE: 2-8-07

REV:

SHEET #



FACILITY SERVICES
7000 DANDINI BLVD.
RENO, NEVADA 89512
P. 775-673-7000
F. 775-673-7112

JOB NAME:

LIBRARY & SIERRA BLDG.
7000 DANDINI BLVD. RENO, NV

SHEET TITLE:

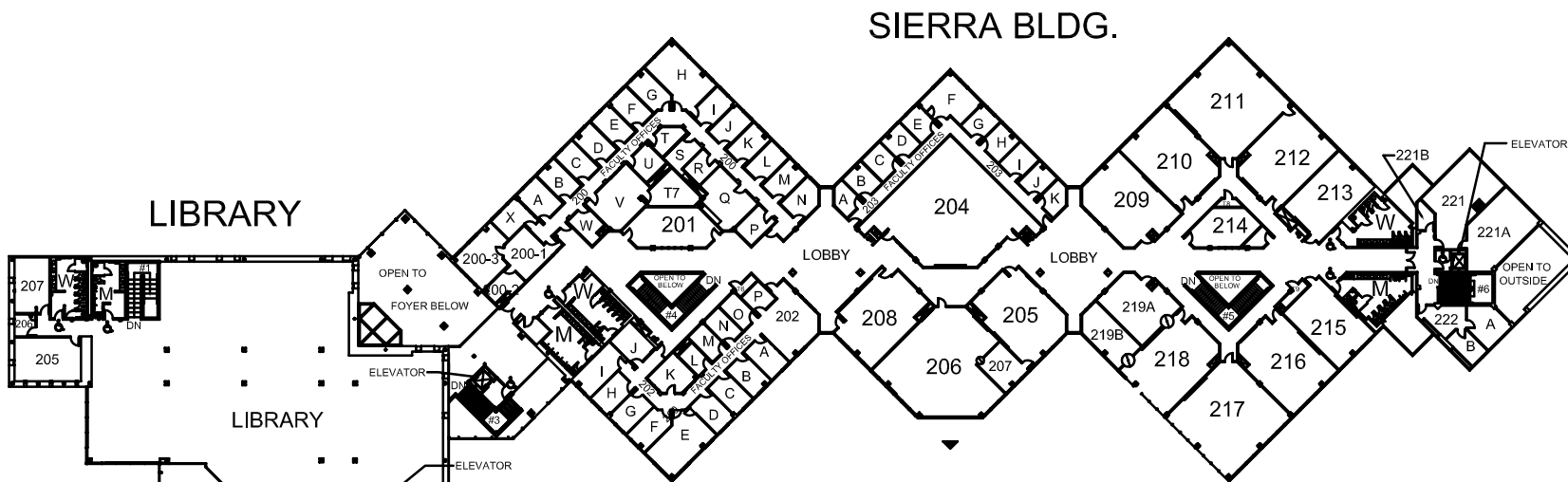
SECOND FLOOR PLAN

SCALE: N.T.S.

DATE: 2-8-07

REV:

SHEET #

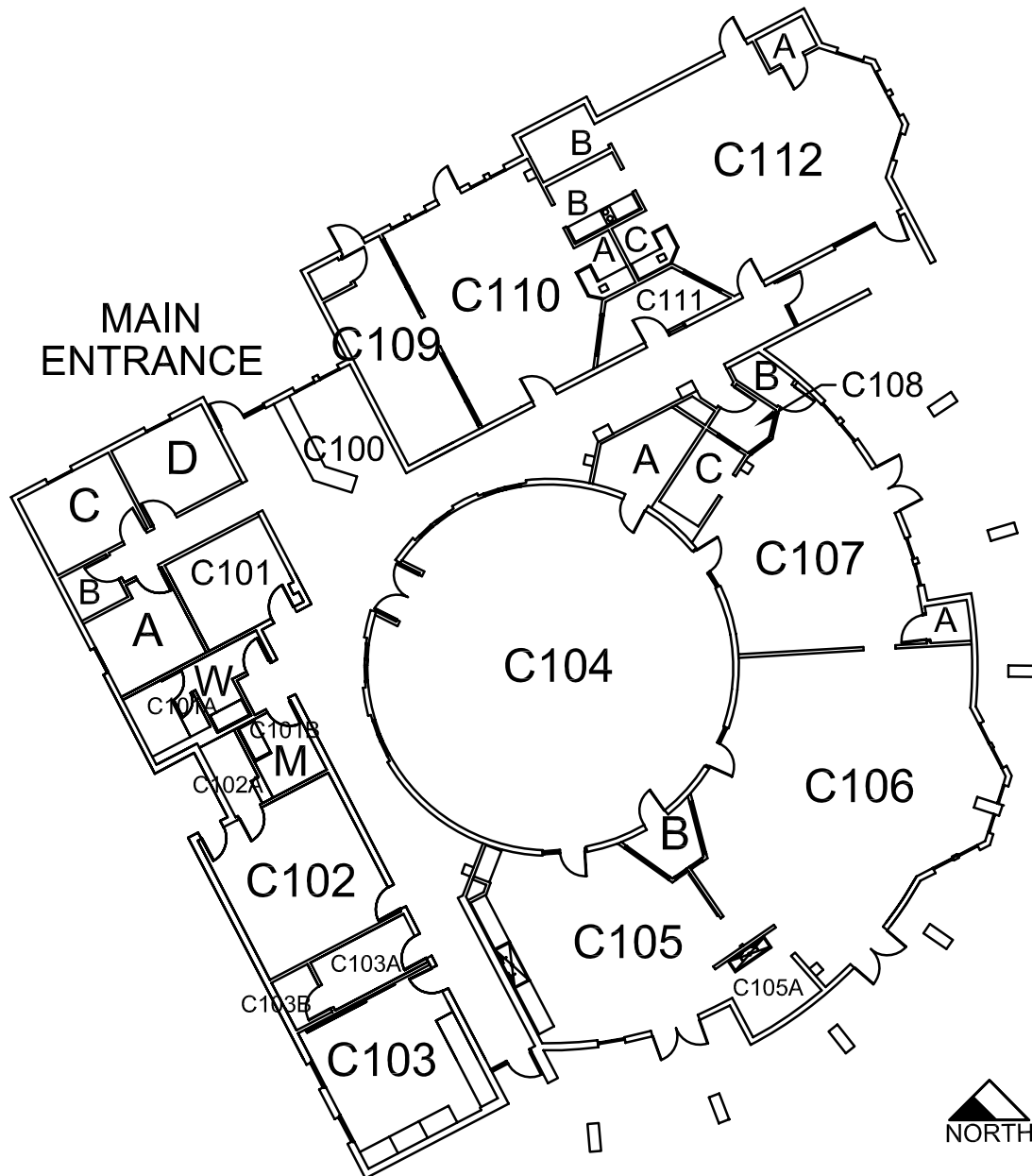


200-1	250	200N	150	202E	355	203E	108	212	820	SUPPORT:	CIRCULATION:		
200-2	108	200P	124	202F	145	203F	278	213	656	201A	388	220	48
200-3	305	200Q	322	202G	137	203G	115	214	388	201B	357	220A	715
200A	162	200R	98	202H	137	203H	125	215	656	201C	74	220B	717
200B	135	200S	110	202I	210	203I	120	216	820	201D	64	220C	746
200C	137	200T	98	202J	155	203J	115	217	1,188	213X	755	220D	530
200D	135	200U	114	202K	177	203K	100	218	820	213A	52	220E	510
200E	136		354	202L	81	204	1,862	219A	490	221	628	220F	3,204
200F	136	200W	124	202M	105	205	814	219B	303	221A	549	220G	304
200G	149	200X	147	202N	108	206	1,451	221B	60	T6	31	220H	304
200H	359	201	480	202O	106	207	197	222	164	T7	194	220I	48
200I	136	202	304	202P	89	208	786	222A	193	T8	25		
200J	136	202A	137	203A	94	209	763	222B	114	T9	41		
200K	135	202B	137	203B	120	210	820						
200L	137	202C	137	203C	120	211	1,188						
200M	135	202D	136	203D	125								
									23,471		3,158		
												7,078	
													GROSS SQ. FT.
													33,707





Child Care Center



C 100	137	C 104	1,489	C 109	249	NET ASSIGN. SQ.FT.	7,543
C 100A	12	C 104A	91	C 109A	13	CORRIDOR:	1,222
C 100B	36	C 104B	48	C 110	528		
C 100C	122	C 105	562	C 110A	21	GROSS SQUARE FEET	8,765
C 100D	125			C 110B	35		
C 101	148	C 106	1,041	C 111	90		
C 102	339	C 107	568	C 112	753		
C 102A	42	C 107A	23	C 112A	24		
C 103	331	C 107B	27	C 112B	50		
C 103A	115	C 107C	58	C 112C	20		
C 103B	27	C 108	39	C113	190		

SHEET #	SCALE: N.T.S.	CHILD CARE CENTER 7000 DANDINI BLVD. RENO, NV	JOB NAME:	FACILITY SERVICES 7000 DANDINI BLVD. RENO, NEVADA 89512 P. 775-673-7000 F. 775-673-7112	
	DATE: 2-8-07				
	REV:		FIRST FLOOR PLAN	SHEET TITLE:	

IGT
Applied Technology Center

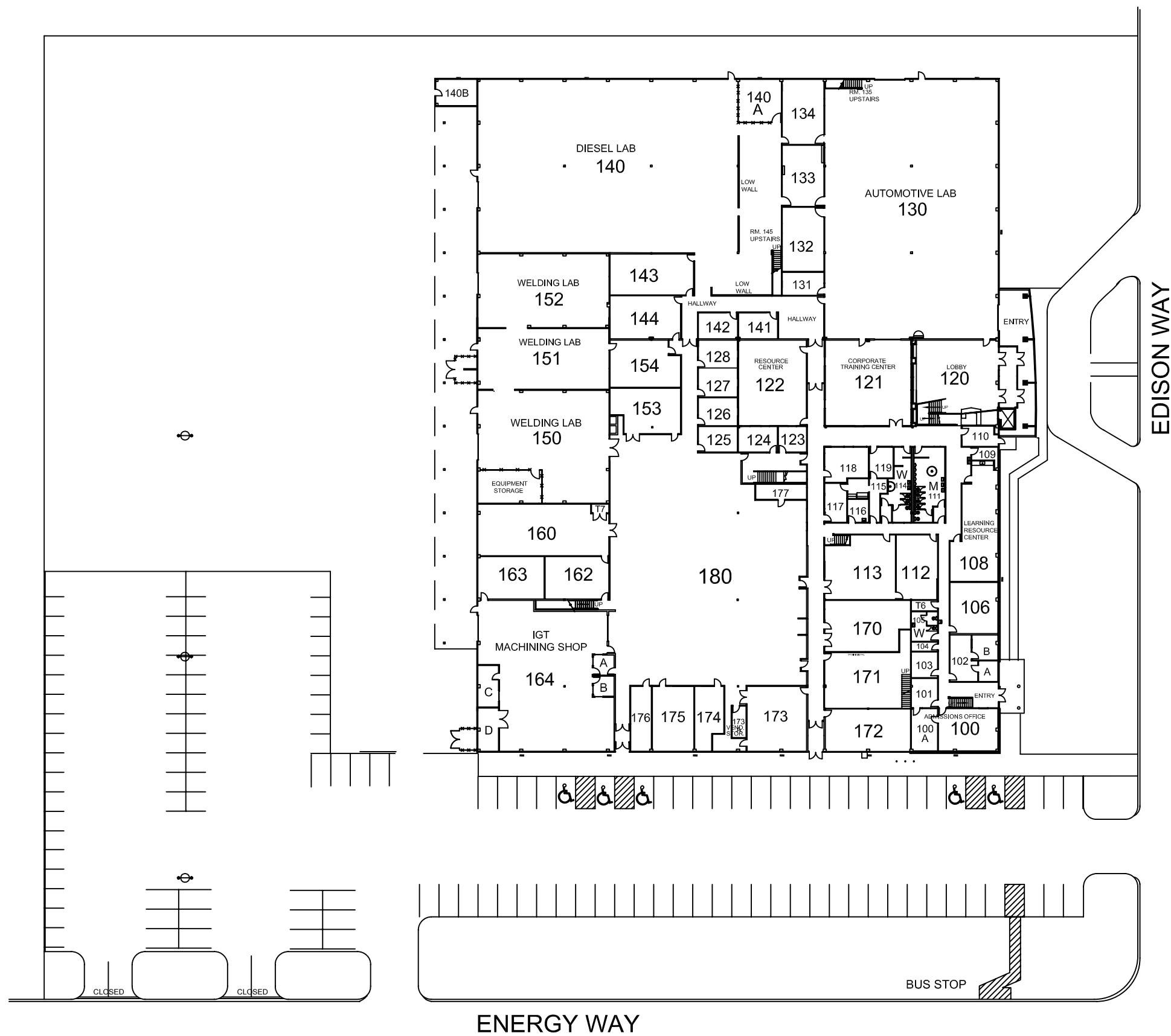


012-361-10
00475 EDISON WY

EDISON WY

EDISON WY

ENERGY WY



FACILITY SERVICES
 7000 DANDINI BLVD.
 RENO, NEVADA 89512
 P. 775-673-7000
 F. 775-673-7112

JOB NAME: IGT Applied Technology Center Reno, NV 89502
 475 Edison Way

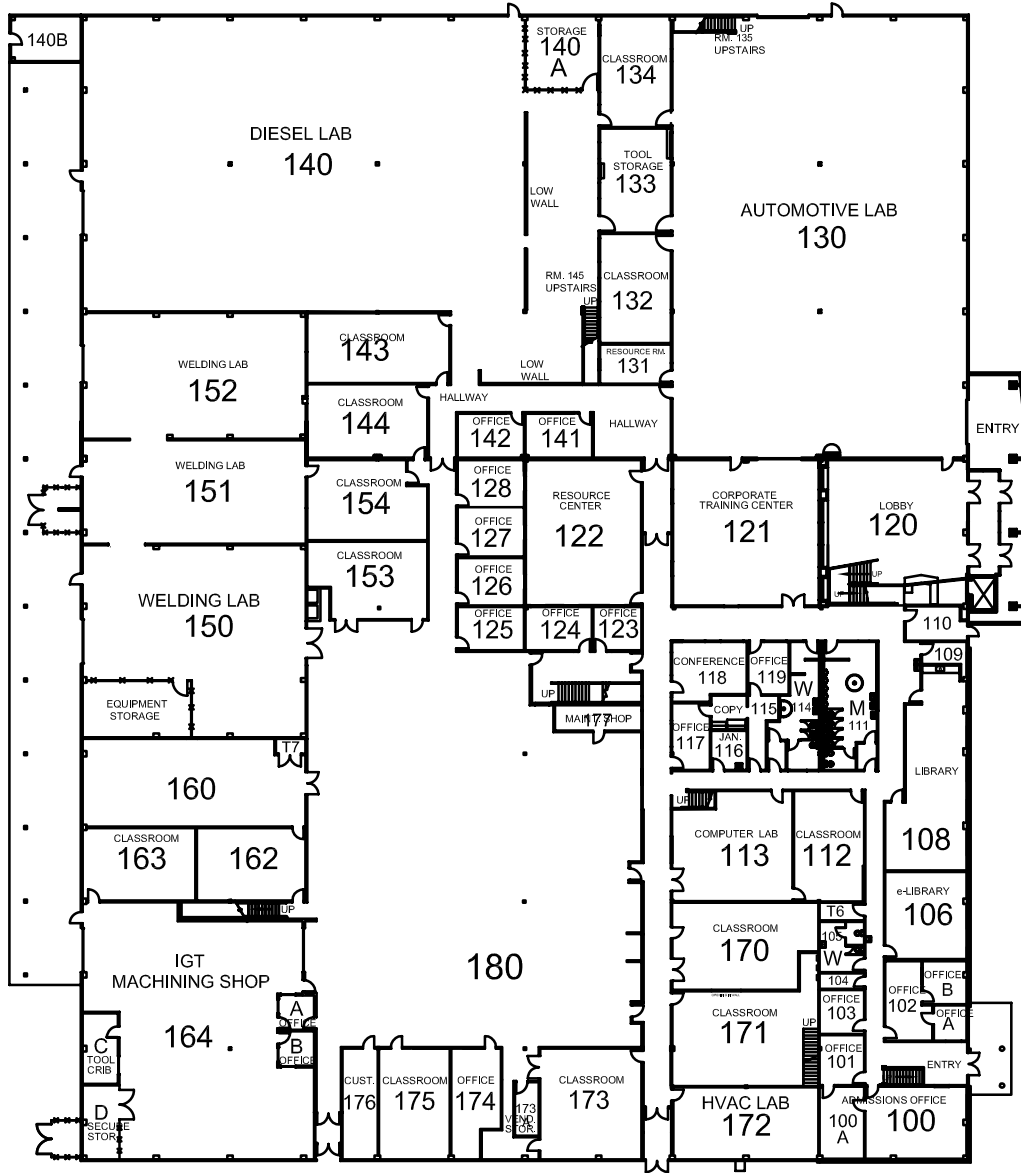
SHEET TITLE: SITE PLAN

SCALE: NTS
 DATE: 2/8/07
 REV:

SHEET #

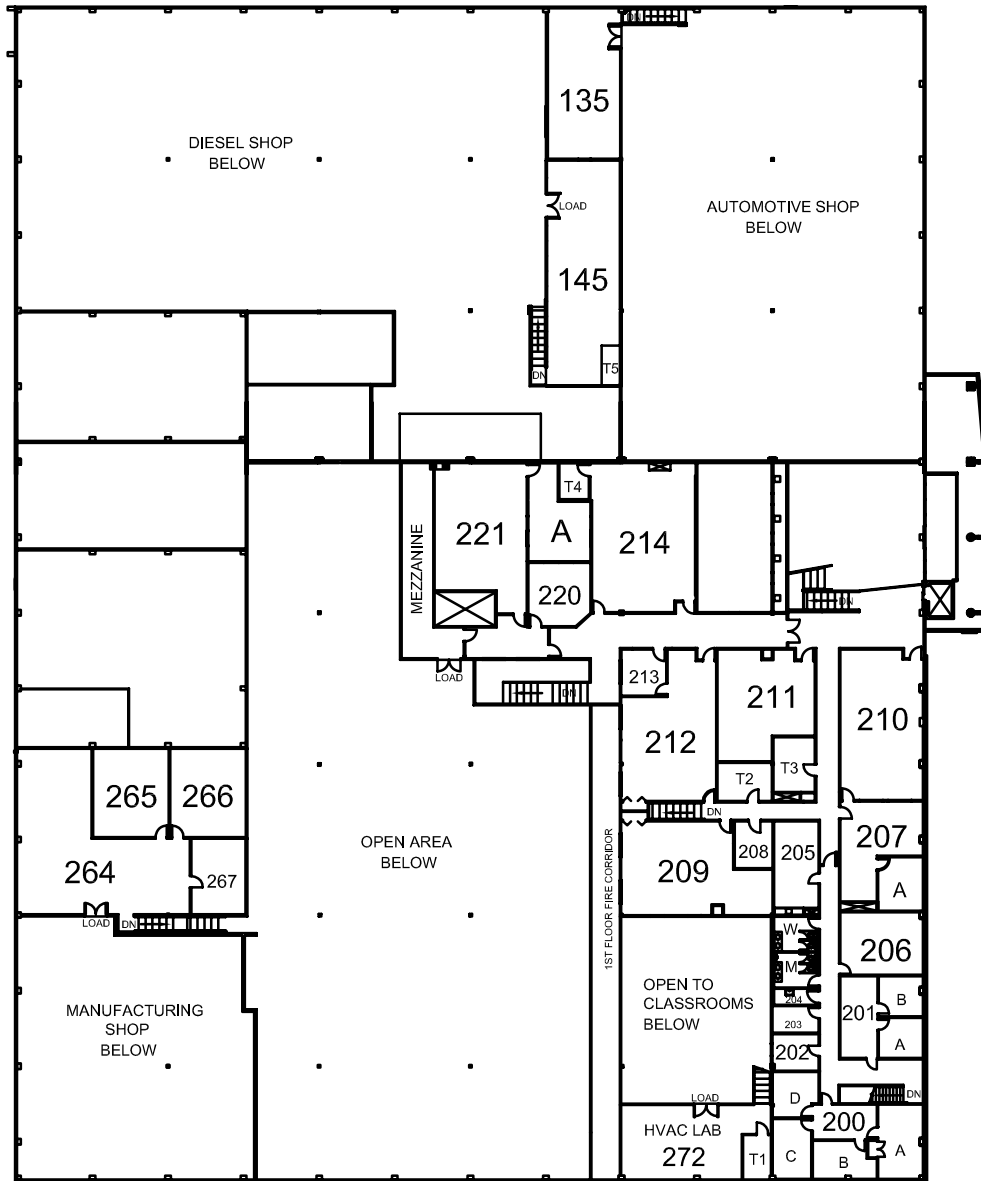


IGT-Applied Technology Center



E100	790	E124	212	E153	624	SUPPORT:	CIRCULATION:	
E101	162	E125	214	E154	656			E104
E102	237	E126	231	E160	1,415		E105	157
E102A	85	E127	235	E162	580		E107	55
E102B	139	E128	230	E163	603		E109	77
E103	137	E130	9,419	E170	926		E110	147
E106	530	E131	204	E171	1,024		E111	490
E108	960	E132	574	E172	832		E114	366
E112	570	E133	545	E173	928		E116	104
E113	917	E134	582	E173A	93		T6	55
E115	212	E140	11,641	E174	356		T7	32
E117	184	E141	214	E175	562			1,532
E118	306	E142	210	E176	280			
E119	155	E143	726	OPEN AREA	13,402			
E120	1,467	E144	649	NET SQ FT:	64,572		GROSS SQ FT:	
E121	1,564	E150	2,670				75,233	
E122	1,235	E151	1,687					
E123	152	E152	2,044					

SHEET #	SCALE: N.T.S.	JOB NAME: IGT APPLIED TECHNOLOGY CENTER 475 EDISON WAY RENO, NV	SHEET TITLE: FIRST FLOOR PLAN	FACILITY SERVICES 7000 DANDINI BLVD. RENO, NEVADA 89512 P. 775-673-7000 F. 775-673-7112	
	DATE: 2-8-07				
	REV:				



135	764	209	861	SUPPORT: T1 87 T2 143 T3 160 T4 75 T5 50 204 49 204X 190 754	CIRCULATION: 2,298
145	1,071	210	862		
200	151	211	652		
200A	242	212	837		
200B	155	213	141		
200C	162	214	966		
200D	137	215	108		
201	211	220	260		
201A	123	221	839		
201B	121	221A	326		
202	216	264	1,384		
203	87	265	470		
205	282	266	467		
206	361	267	287		
207	427	NET SQ FT			
207A	168	13,460			
208	122				
					MISC. SQ FT 222 140 223 477 171A 763 MISC. 3,171 4,551
					GROSS SQ FT 21,063

SHEET #	SCALE: N.T.S.	JOB NAME: IGT APPLIED TECHNOLOGY CENTER 475 EDISON WAY RENO, NV	SHEET TITLE: SECOND FLOOR PLAN	FACILITY SERVICES 7000 DANDINI BLVD. RENO, NEVADA 89512 P. 775-673-7000 F. 775-673-7112	
	DATE: 2-8-07				
	REV:				

Meadowood Center

372-18

NEIL RD

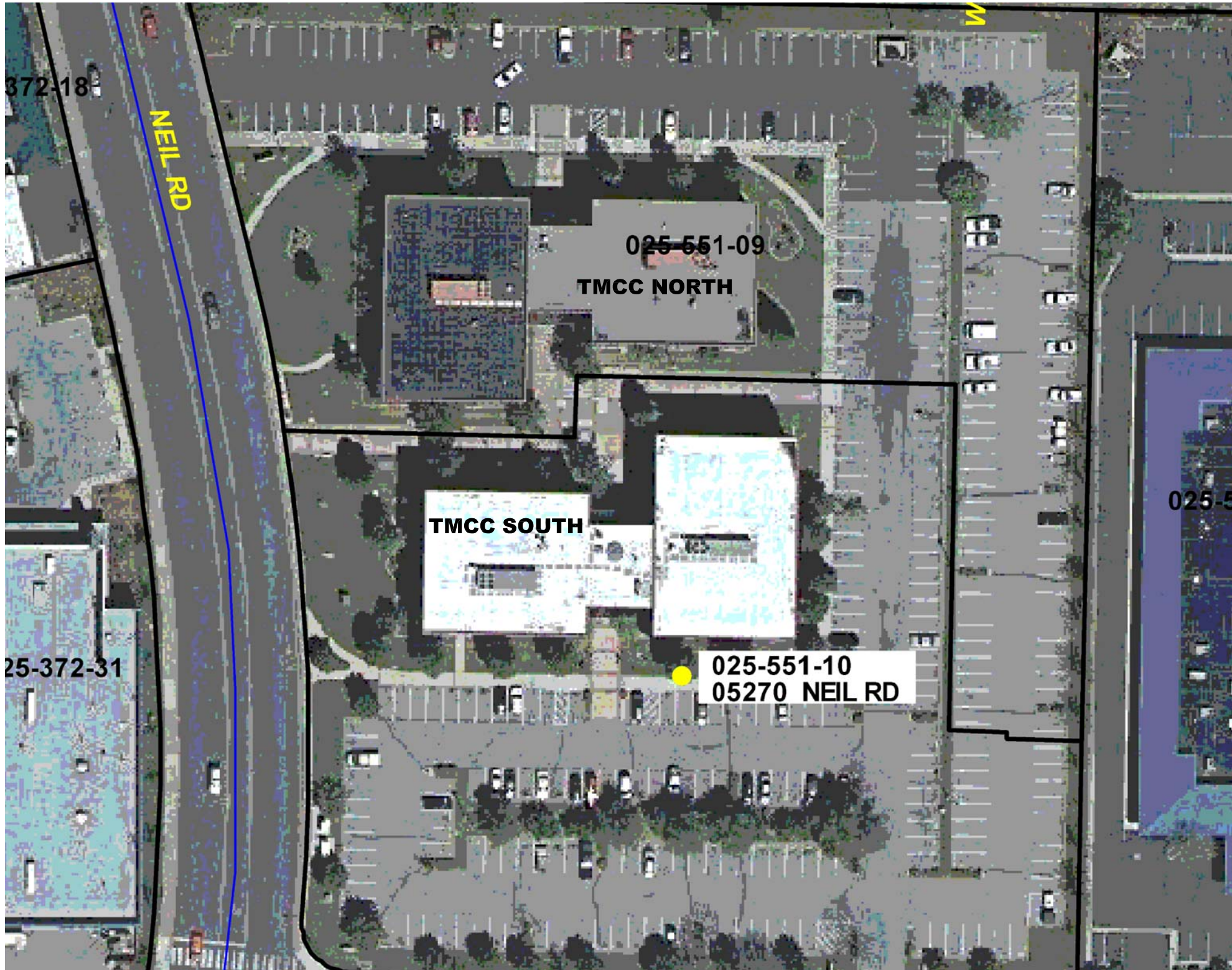
025-551-09
TMCC NORTH

TMCC SOUTH

025-551-10
05270 NEIL RD

025-5

25-372-31



025-401-08

025-401-06

MARVEL WY

MARVEL WY

025-371-28

025-403-14

025-403-15

025-403-09

WILD ROSE LN

TMCC

025-403-02

025-403-03

025-371-27

TMCC

025-403-12

TMCC

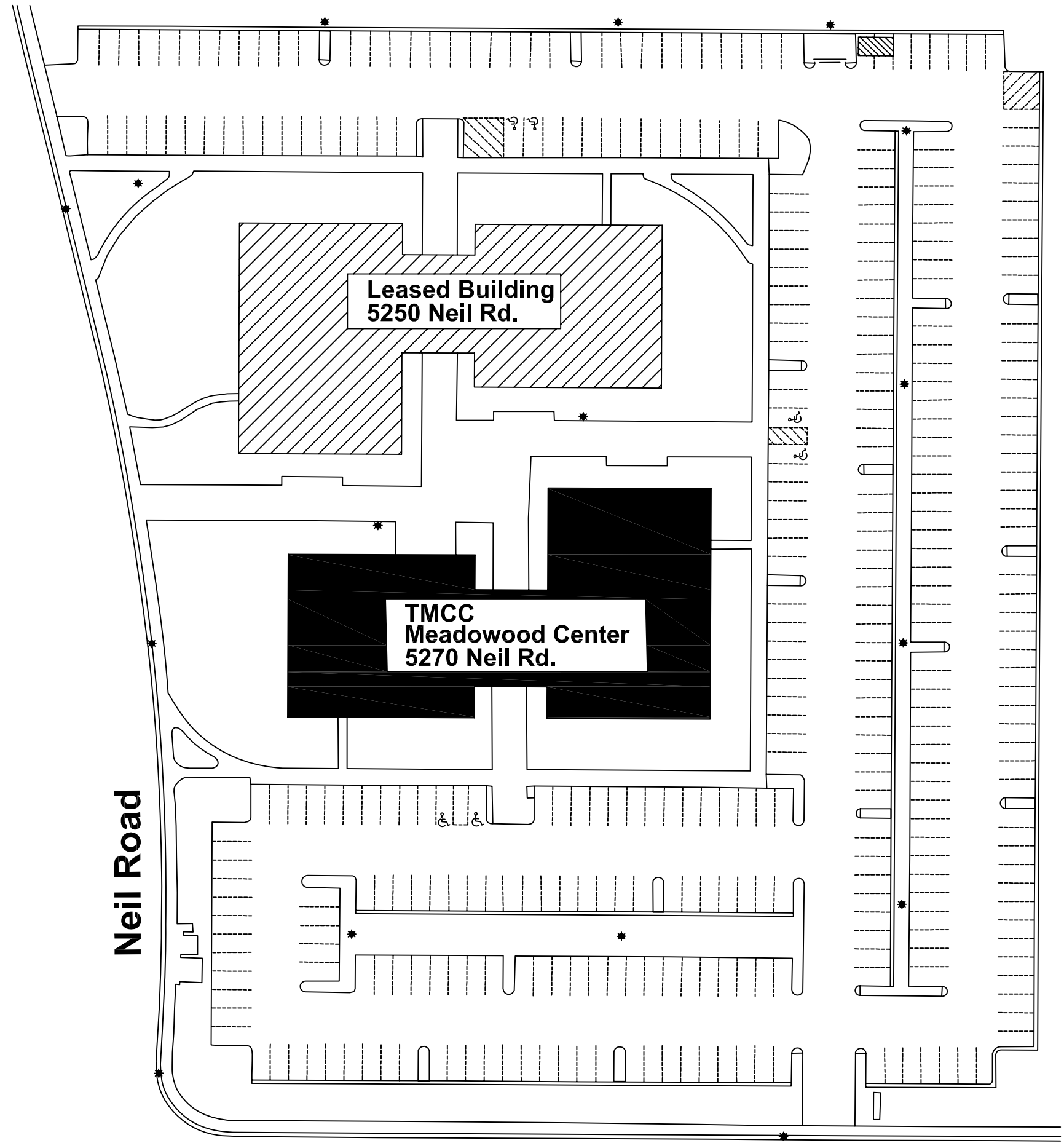
025-551-09

025-551-14

025-551-05

GGINS CT

025-551-



Neil Road

Meadow Wood Lane

**Leased Building
5250 Neil Rd.**

**TMCC
Meadowood Center
5270 Neil Rd.**

SHEET #

SCALE: NTS

DATE: 2/6/07

REV:

JOB NAME:

Meadowood Center
5270 Neil Road, Reno, Nv 89502

SHEET TITLE:

SITE PLAN

FACILITY SERVICES
7000 DANDINI BLVD.
RENO, NEVADA 89512
P. 775-673-7000
F. 775-673-7112



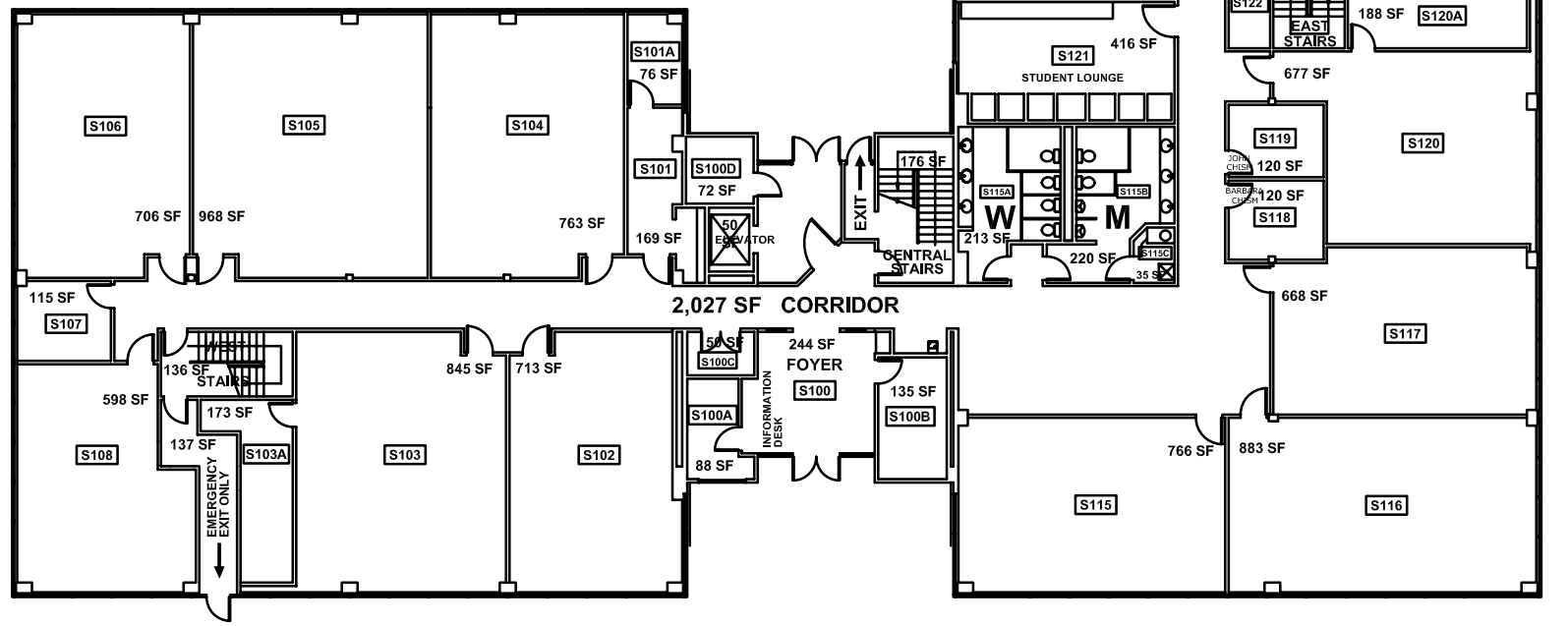


Meadowood Center



FACILITY SERVICES
 7000 DANDINI BLVD.
 RENO, NEVADA 89512
 P. 775-673-7000
 F. 775-673-7112

S100	244	S103A	173	S115C	35	S123	880
S100A	88	S104	763	S116	766	S124	697
S100B	136	S105	968	S117	883		12,310
S100C	58	S106	706	S118	668	CIRCULATION-	2,027
S100D	72	S107	115	S119	120	CORRIDORS	518
S101	169	S108	598	S120	677	STAIRS/ELEV	2,545
S101A	76	S115	766	S120A	188		
S102	713	S115A	213	S121	416		
S103	845	S115B	220	S122	57	TOTAL SF	14,855



JOB NAME:
 MEADOWOOD CENTER
 5270 NEIL RD. RENO, NV

SHEET TITLE:
 FIRST FLOOR PLAN

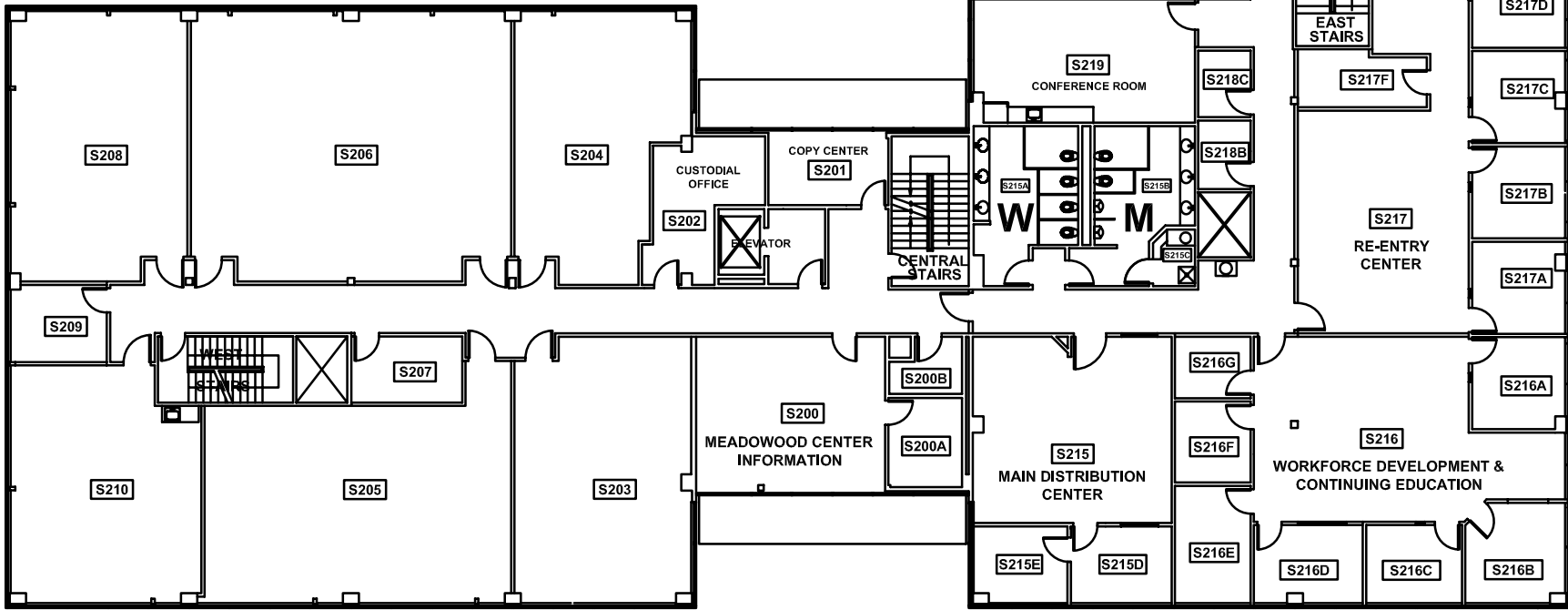
SHEET #

SCALE: N.T.S.
 DATE: 2-8-07
 REV:



FACILITY SERVICES
7000 DANDINI BLVD.
RENO, NEVADA 89512
P. 775-673-7000
F. 775-673-7112

S200	450	S209	115	S216C	114	S217E	122	S220D	139
S200A	100	S210	660	S216D	130	S217F	108	S220E	152
S200B	54	S215	647	S216E	130	S217G	218	12,473	
S201	132	S215A	220	S216F	93	S218B	54	CIRCULATION- CORRIDORS	1,384
S202	190	S215B	218	S216G	76	S218C	58		
S203	704	S215C	35	S217	612	S219	413	STAIRS/ELEV	520
S204	617	S215D	117	S217A	128	S220	482	1,904	
S205	944	S216	704	S217B	130	S220A	145	TOTAL SF	14,377
S206	1,271	S216A	130	S217C	128	S220B	207		
S207	112	S216B	146	S217D	130	S220C	430		



JOB NAME:

MEADOWOOD CENTER
5270 NEIL RD. RENO, NV

SHEET TITLE:

SECOND FLOOR PLAN

SCALE: N.T.S.

DATE: 2-8-07

REV:

SHEET #

JOB NAME:

MEADOWOOD CENTER
5270 NEIL RD. RENO, NV

THIRD FLOOR PLAN

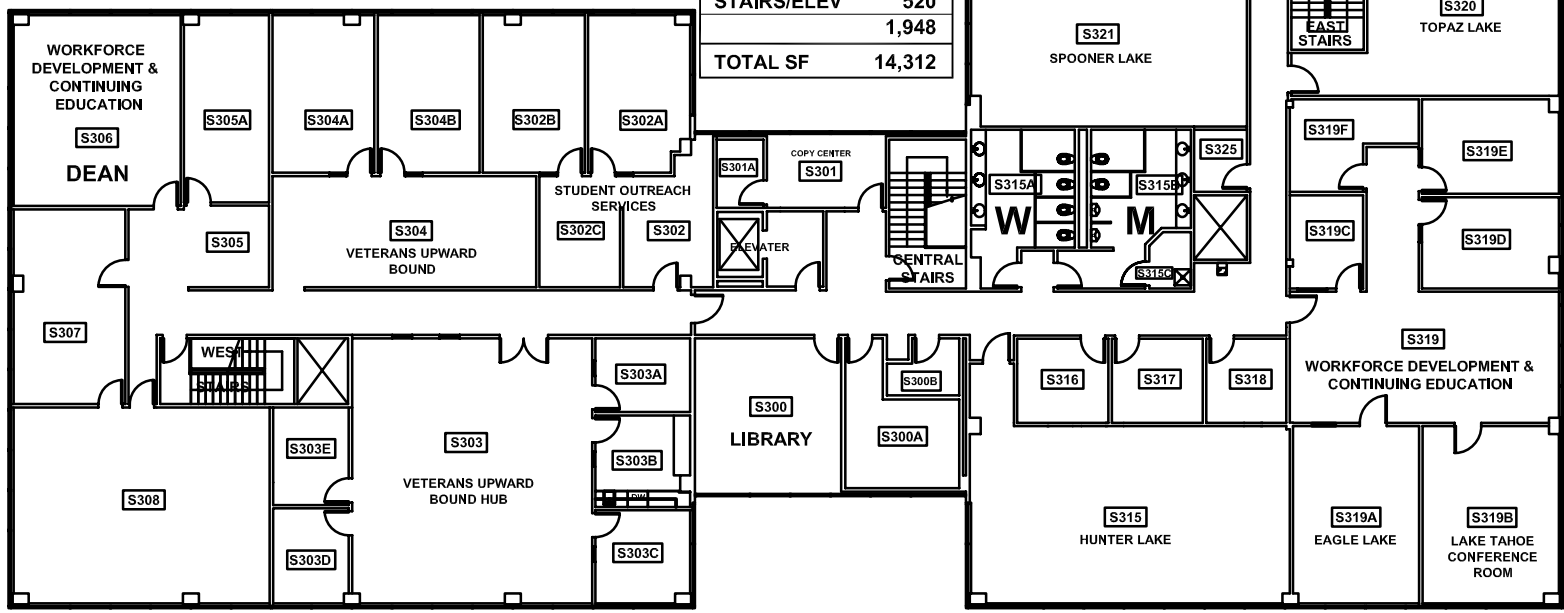
SCALE: N.T.S.

DATE: 2-8-07

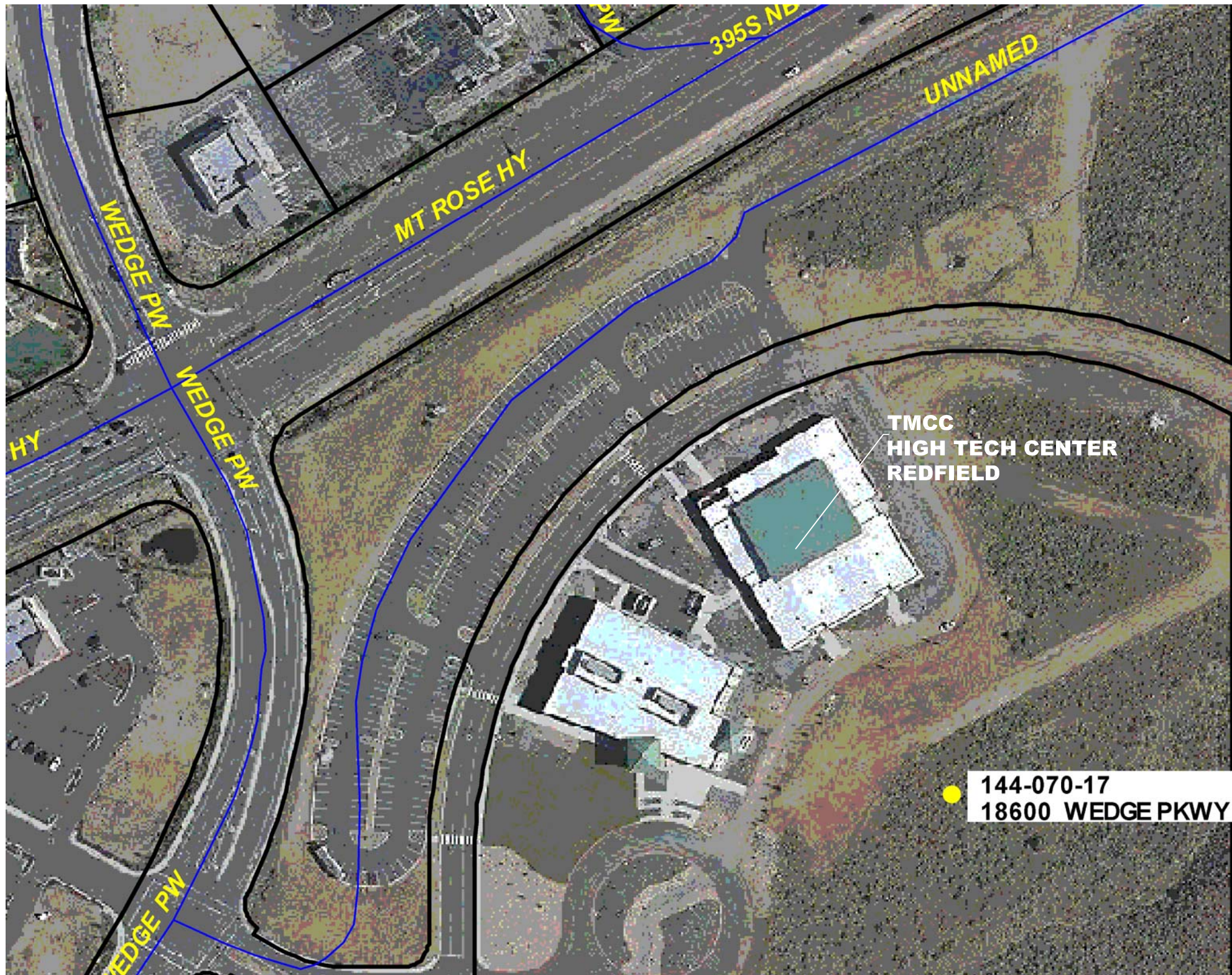
REV:

SHEET #

S300	351	S303	864	S305	102	S316	119	S319F	143
S300A	191	S303A	107	S305A	244	S317	119	S320	602
S300B	54	S303B	131	S306	489	S318	103	S321	711
S301	136	S303C	133	S307	336	S319	661	S322	648
S301A	50	S303D	111	S308	774	S319A	344	S323	120
S302	174	S303E	113	S315	909	S319B	370	S324	574
S302A	238	S304	452	S315A	214	S319C	106	S325	50
S302B	246	S304A	246	S315B	222	S319D	190		
S302C	138	S304B	246	S315C	35	S319E	198		
								12,364	
								CIRCULATION-	1,428
								CORRIDORS	
								STAIRS/ELEV	520
									1,948
								TOTAL SF	14,312



High Tech Center- Redfield



MT ROSE HY

395S NB

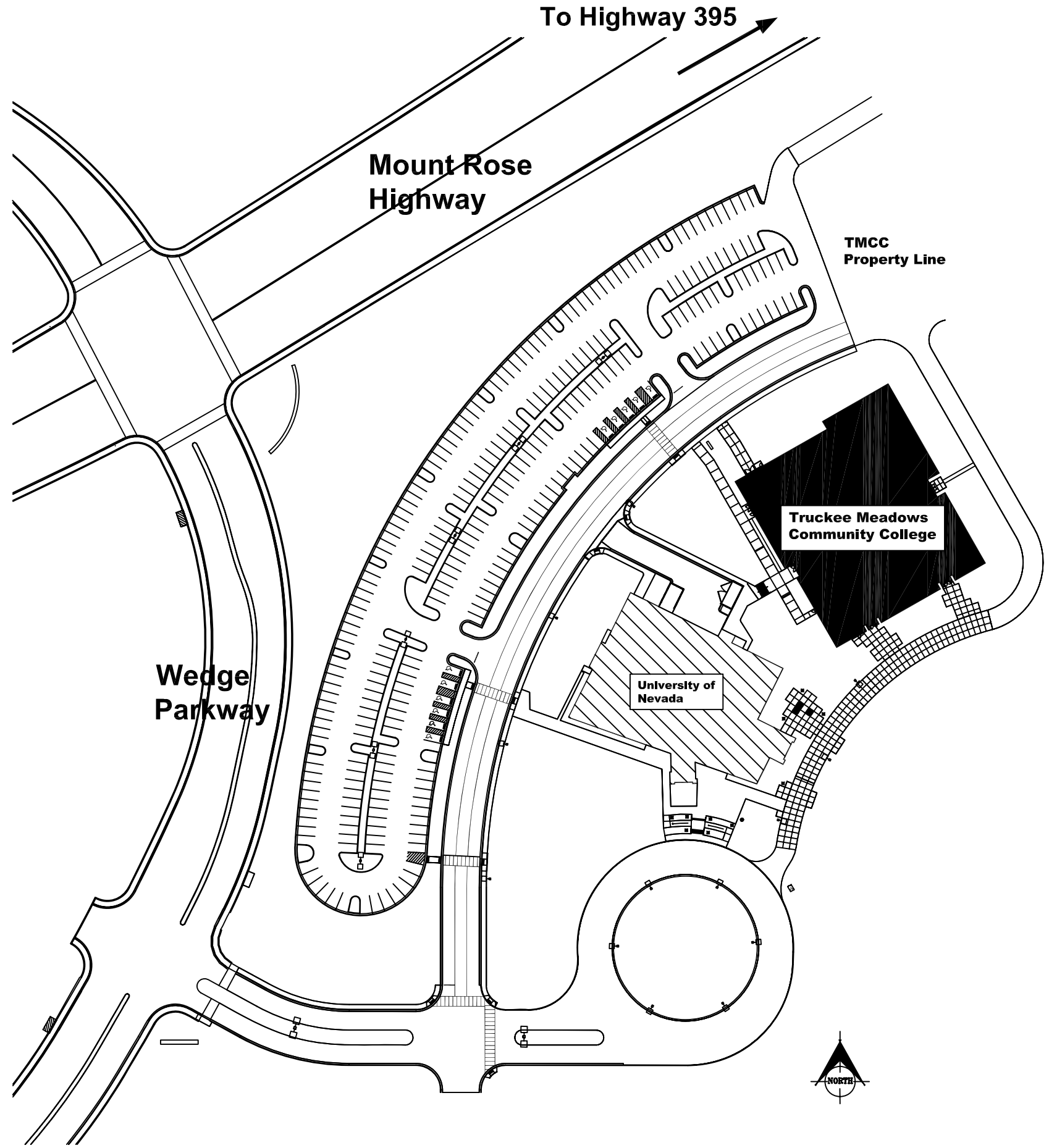
UNNAMED

WEDGE PKWY

WEDGE PKWY

TMCC
HIGH TECH CENTER
REDFIELD

144-070-17
18600 WEDGE PKWY



FACILITY SERVICES
 7000 DANDINI BLVD.
 RENO, NEVADA 89512
 P. 775-673-7000
 F. 775-673-7112

JOB NAME: High Tech Center at Redfield
 18600 Wedge Parkway, NV 89511

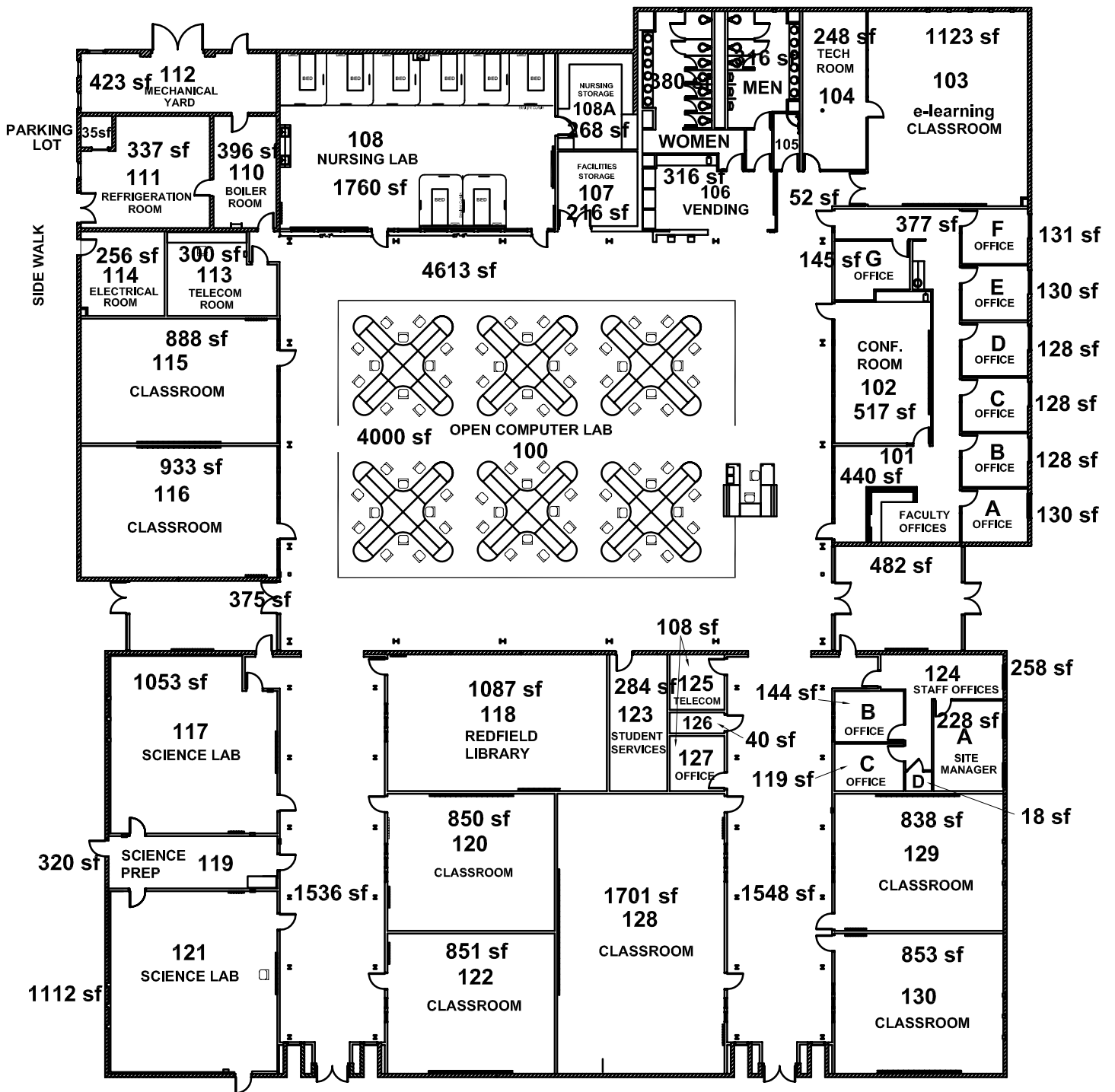
SHEET TITLE: SITE PLAN

SCALE: NTS
 DATE: 2-6-07
 REV:

SHEET #

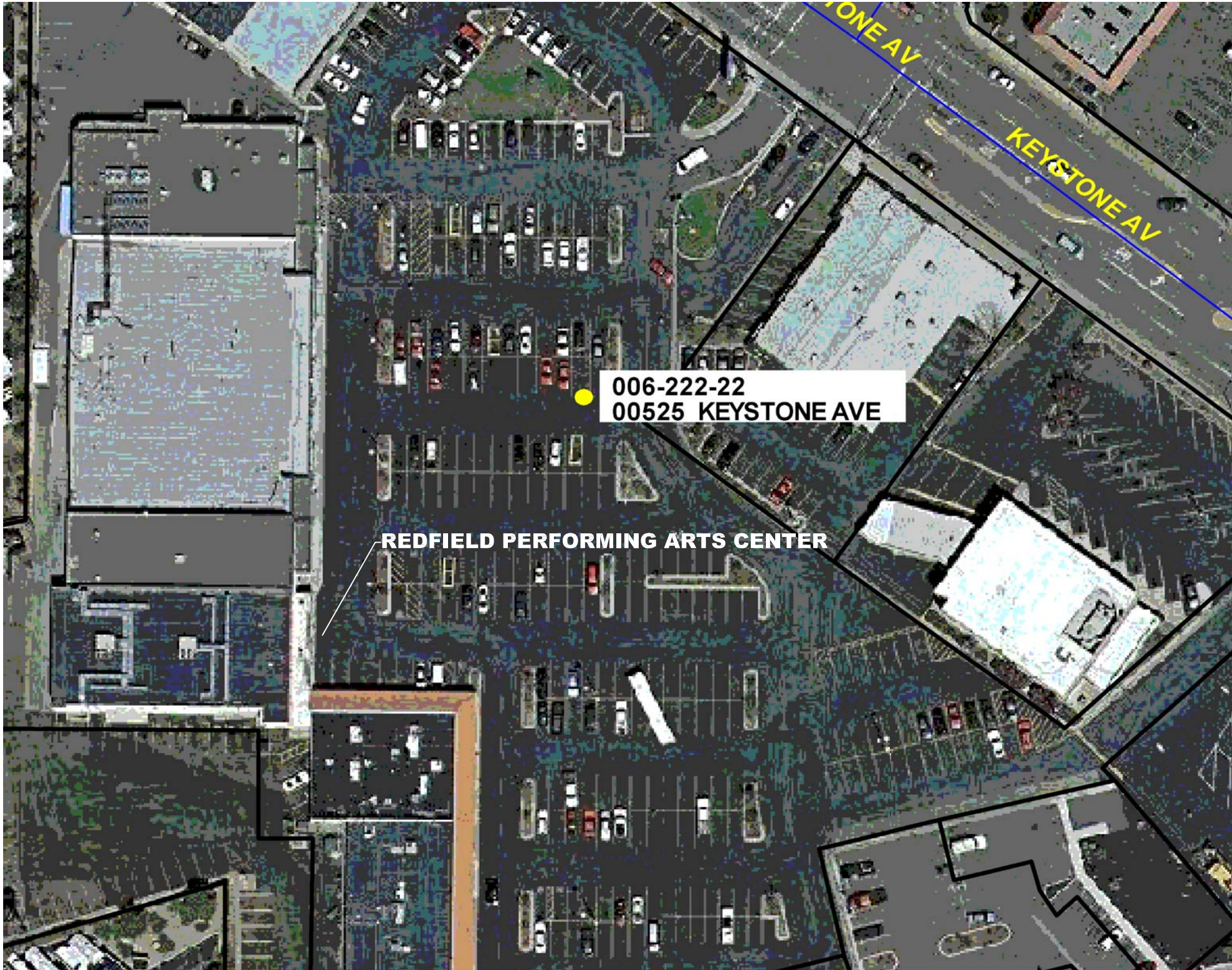


High Tech Center at Redfield



SHEET #	SCALE: N.T.S.	HIGH TECH CENTER at REDFIELD 18600 WEDGE PRKWAY. RENO, NV	JOB NAME:	FACILITY SERVICES 7000 DANDINI BLVD. RENO, NEVADA 89512 P. 775-673-7000 F. 775-673-7112		
	DATE: 2-8-07					SHEET TITLE:
	REV:					

Redfield Performing Arts Center



006-222-22
00525 KEYSTONE AVE

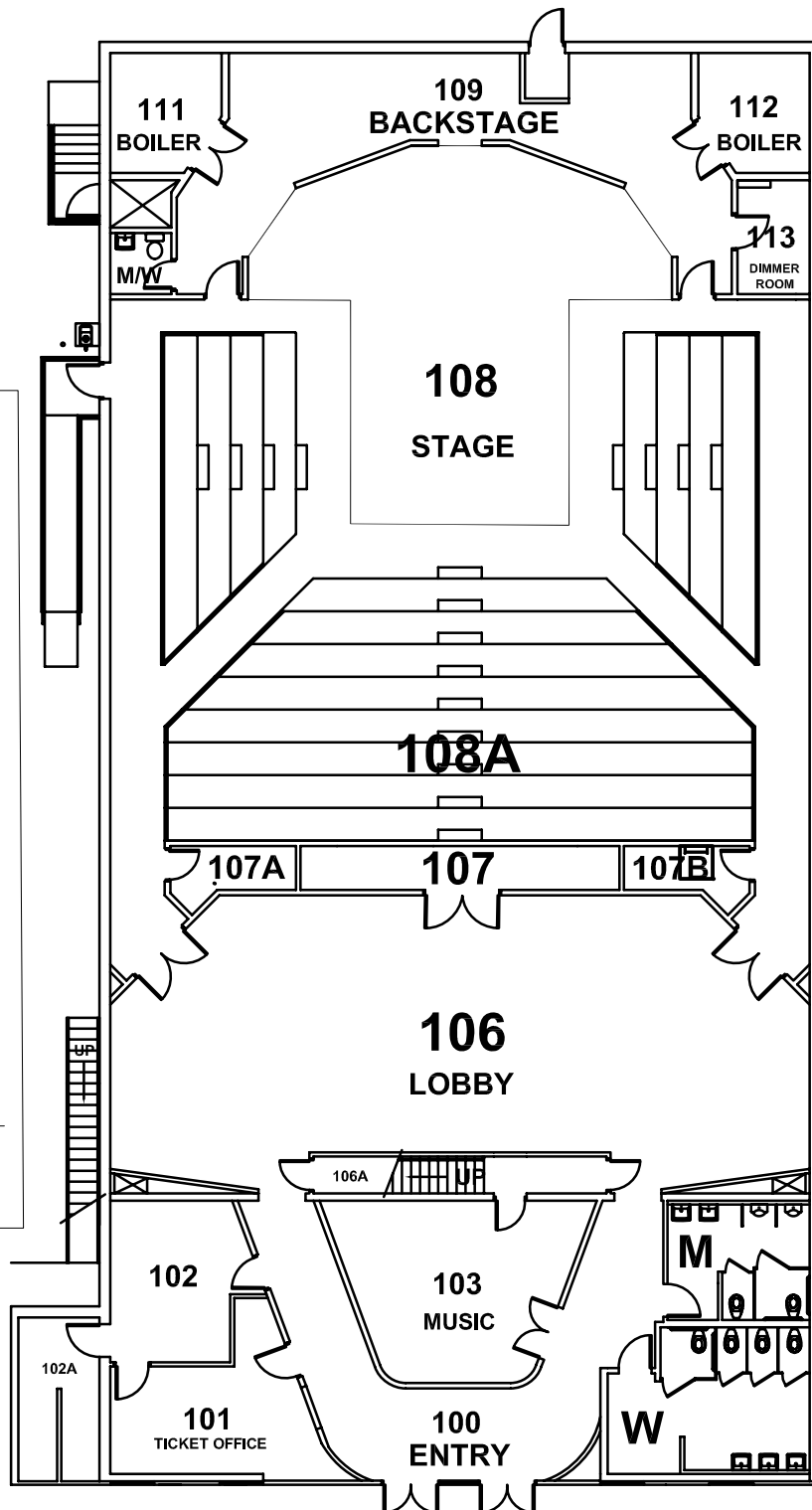
REDFIELD PERFORMING ARTS CENTER

KEYSTONE AV

KEYSTONE AV



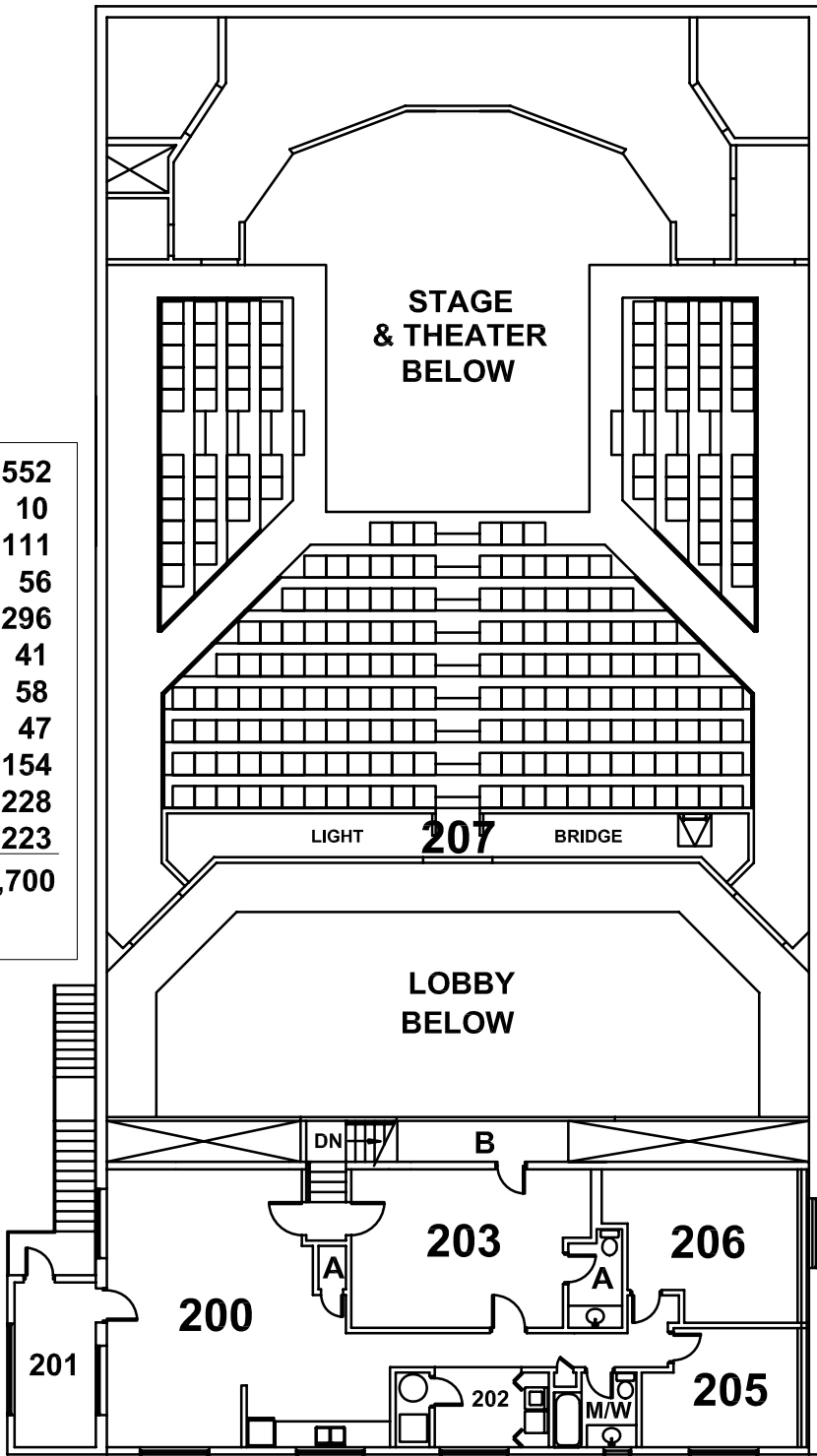
Redfield Performing Arts Center



100	450
101	216
102	176
102A	107
103	320
104	232
105	137
106	1,522
106A	32
106B	90
106C	90
107A	66
107B	66
108	850
108A	3,140
109	608
110	32
111	102
112	102
113	87
TOTAL SQ.FT.	
8,425	

SHEET #	SCALE: N.T.S.	JOB NAME: REDFIELD PERFORMING ARTS CENTER 505 KEYSTONE AVE. RENO, NV	FACILITY SERVICES 7000 DANDINI BLVD. RENO, NEVADA 89512 P. 775-673-7000 F. 775-673-7112	 TMCC Truckee Meadows Community College
	DATE: 2-8-07			
	REV:	SHEET TITLE: FIRST FLOOR PLAN		

200	552
200A	10
201	111
202	56
203	296
203A	41
203B	58
204	47
205	154
206	228
207	223
TOTAL 1,700	



SHEET #	SCALE: N.T.S.	JOB NAME: REDFIELD PERFORMING ARTS CENTER 505 KEYSTONE AVE. RENO, NV	FACILITY SERVICES 7000 DANDINI BLVD. RENO, NEVADA 89512 P. 775-673-7000 F. 775-673-7112		
	DATE: 2-8-07				SHEET TITLE: SECOND FLOOR PLAN
	REV:				